

# BAER<sup>®</sup> Your Complete Performance Brake Supplier!



## Installation Instructions

Product: EradiSpeed Front

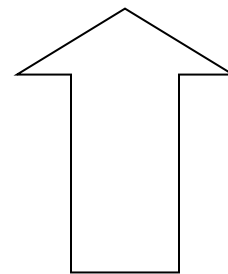
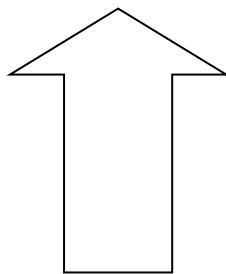
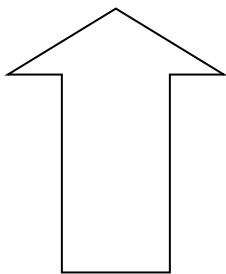
Instruction Part Number: 6000295

Revision Date: 01 April 2016

## Vehicle

Make: Ford  
Model: F150 2WD / 4WD  
Year(s): 04>

**ATTENTION: Read this before going any farther!  
Returns will not be accepted for ANY installed PART or  
ASSEMBLY. Use great care to prevent cosmetic damage  
when performing wheel fit check.**



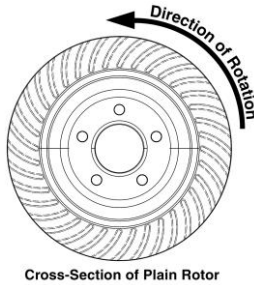
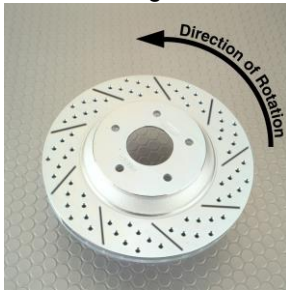
## Notices – Read and Follow BEFORE ATTEMPTING INSTALLATION

- All installations require proper safety procedures and protective eyewear.
- All installations assume basic mechanical skill and a factory service manual for the vehicle on which the installation is to be performed.
- All references to LEFT side of vehicle always refer to the Driver's side of the vehicle.
- Any installation requiring you to remove a wheel or gain access under the vehicle requires use of jack stands appropriate to the weight of the vehicle. In all cases Baer recommends jack stands rated for at least 2-tons.
- A selection of hand tools sufficient to engage in the installation of these products is assumed and is the responsibility of the installer to have in his/her possession prior to beginning this installation. All installations, which require removal of hydraulic hoses and/or bleeding of the brakes, require appropriate fitting/line wrenches, as well as a safety catch can and protective eyewear. Other than these items, if unique or special tools are required they are listed in the section for that step.
- ALWAYS CONFIRM WHEEL FIT PRIOR TO BEGINNING INSTALLATION OF ANY BRAKE SYSTEM OR "UPSIZED" ROTOR UPGRADE! In addition to already having checked fit using the Baer Brake Fit Templates available online at [www.baer.com](http://www.baer.com), always place the actual corner assembly or a combination of the caliper assembly fit onto the rotor into the actual wheel to reconfirm proper clearance is available between the caliper and the wheel before proceeding with the actual installation. **Returns will not be accepted for systems that have been partially or completely installed. Use extreme care when performing wheel fit check to prevent cosmetic damage.**

## ***BAER Your Complete Performance Brake Supplier!***



- When installing rotors on any Baer Products be sure to follow the direction of rotation indicated on



the rotor hat area with either an arrow, or an "L" for left, or an "R" for right, or both. "L" or left, always indicates the driver's side of US spec vehicles.

Images shown are "L" left rotors.

- A proper professional wheel alignment is required for any system requiring replacement of the front spindles, or tie rod ends. Follow factory prescribed procedures and specifications unless otherwise indicated.
- At all times stop the installation if anything is unclear, or the parts require force to install. Consult directly with Baer Technical Staff in such instances to confirm details. Please have these instructions, as well as the part number machined on the component that is proving difficult to install, as well as the make, model, and year (date of vehicle production is preferred) of your vehicle available when you call. Baer's Tech Staff is available from 8:30-am to 5-pm Mountain Standard Time (Arizona does not observe Daylight Savings Time) at 602 233-1411 Monday through Friday.

## INSTALLATION:

Remove caliper anchor bolts from spindle. Save these as they will be used to secure the Baer caliper anchor to the spindle.

Remove the caliper from the rotor and suspend in the wheel well. Do not allow the caliper to hang from the fluid hose and this may damage the hose. The fluid hose does not need to be disconnected from the hard line.

### **4WD**

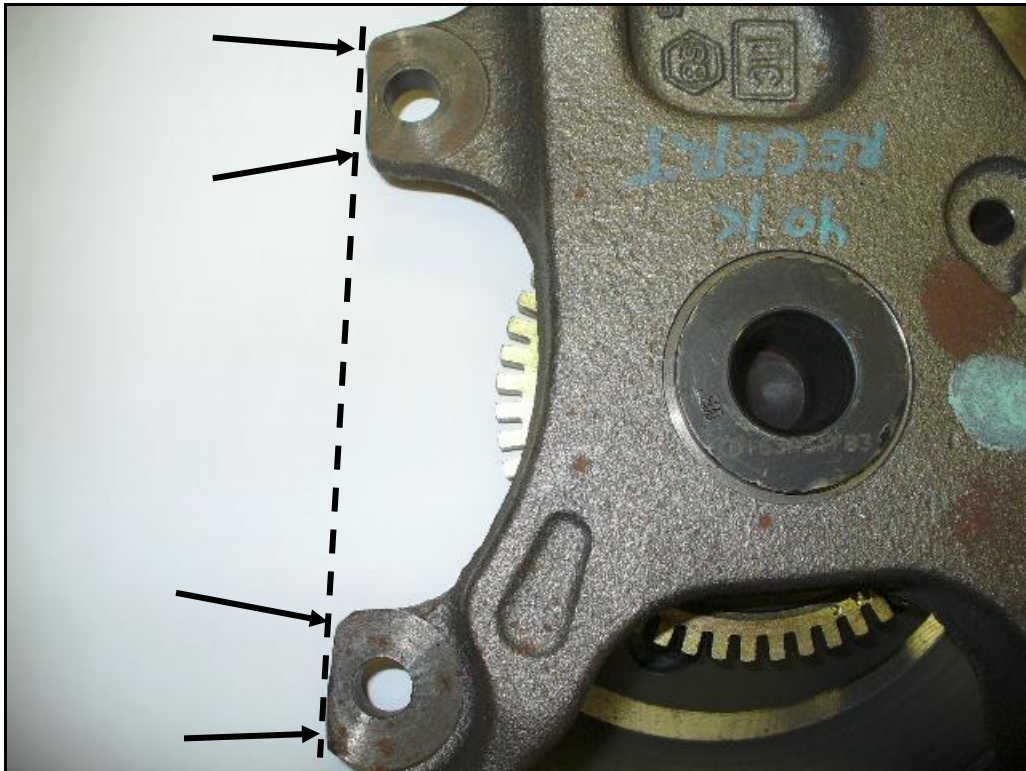
Remove original rotor. Clean the hub surface and caliper bracket mounting surface to allow correct mounting of new components.

### **2WD**

Remove the rotor and discard the retaining nut, this is a one time use fastener. Using factory service procedures install the Baer hub on the spindle with a new retaining nut, **and torque to 295 ft-lbs.** Clean the caliper anchor mounting pads to allow correct mounting of new components.

### **2WD & 4WD**

To obtain clearance for the intermediate bracket the caliper mount tabs must be trimmed with a grinder or reciprocal saw. Cut along the line indicated leaving 0.300" between the bolt hole and the outer edge of the tab. See photos below for reference.



**Remove material indicated by arrows and line**

Removal of material in this manner will not compromise the strength of the spindle. Use care not to remove excess material. You must leave 0.300" to properly mount the intermediate bracket.

***BAER Your Complete Performance Brake Supplier!***



**Thickness between bolt hole and edge must be 0.300"**

Install the intermediate bracket to the spindle using your original caliper bolts. Torque to 110 ft-lbs.



**Bracket installed after caliper tabs trimmed.**

## ***BAER Your Complete Performance Brake Supplier!***

Install correct side rotor and secure with 1 lug nut, using a washer to avoid scratching rotor finish.

Install the caliper over the rotor (you may need to retract the pistons & pads to fit over the new rotor) and secure with the supplied bolts and washers. Torque these to 125 ft-lbs.

Repeat these steps for the other side and recheck all attachment points and fittings.

Refer to Rotor Seasoning procedures contained on a separate sheet.

For service components and replacement parts contact your Baer Brake Systems Tech Representative.