



Engine Kit Installation Guide

TVS2650 SUPERCHARGER

FORD 7.3L GODZILLA V8



Important Information

Installing the supercharger indicates your acceptance of the responsibility and liability associated with the fitment and use of this product. Please ensure the owner and drivers of the supercharged vehicle are aware of their responsibilities and liabilities as indicated below.

Thank you for purchasing this supercharger which has been designed and made with pride. The owner and drivers of the enhanced vehicle must be aware that fitment of a supercharger may affect:

- The vehicle's factory warranty.
- Insurance cover and associated liabilities.
- Compatibility with emission and roadworthy certification.
- The validity of a driver's license for a supercharged vehicle.
- The handling & braking capability of the vehicle due to increased engine power & torque characteristics.
- The longevity of the engine.
- The vehicle will need to use premium unleaded fuel only (98 RON).

It is the owner's/driver's responsibility to accept any consequences and liabilities of using the supercharger and any subsequent effect it may have. Harrop Engineering shall not be liable and shall be 'Held Harmless' for any direct and/or indirect/consequential losses, costs, damages, expenses, injuries or liabilities whatsoever incurred by the owner/driver of the vehicle or other parties arising from this supercharger, its installation and/or its operation. It is recommended that vehicles have completed 1,500 km and have been driven, serviced and maintained in accordance with the vehicle manufacturer's handbook before fitting a supercharger. An engine should be deemed reliable and have delivered all reasonable expectations in line with the vehicle manufacturer's specifications prior to fitting a supercharger.

Warranty

This supercharger is covered by a limited warranty on components and workmanship for a period of 36 months from the date of purchase, subject to the following:

- Installation must be completed by a qualified motor mechanic or technician who has undertaken appropriate training in fitting Harrop superchargers.
- The supercharger has not been modified or "overdriven" by fitting alternative drive pulleys.
- The supercharged vehicle has been tuned by an appropriately qualified and experienced technician.
- The supercharged vehicle has been driven in accordance with the conditions specified by the vehicle manufacturer's normal use of operation, driving care and vehicle service program.
- The supercharged vehicle has not been used for competitive racing.

No warranty shall apply where Harrop have determined improper fitment or handling, misuse in operation, neglect, or accident damage. Engine modifications made prior to or in conjunction with the supercharger fitment may invalidate the Harrop limited warranty. Any warranty claims must be made immediately & directly in writing to Harrop Engineering so that a determination can be made promptly. Involvement of a third party or an attempt to repair a perceived/actual fault may invalidate the warranty. To the extent of the law, the determination on any warranty claim & associated costs will be at the sole discretion of Harrop Engineering.

By installing the supercharger, you acknowledge that all conditions pertaining to this supercharger and its operation have been read, understood and accepted.

For 65 years Harrop Engineering has been at the forefront of designing, developing, and manufacturing precision performance components. Today our innovative and logical approach is applied to low volume automotive OEMs and the performance aftermarket through a dedicated team of 65 staff. Core performance products include Superchargers, Engine Components, Brakes, Differentials and we are also the exclusive Australian Distributor for Forgeline Motorsport Wheels.

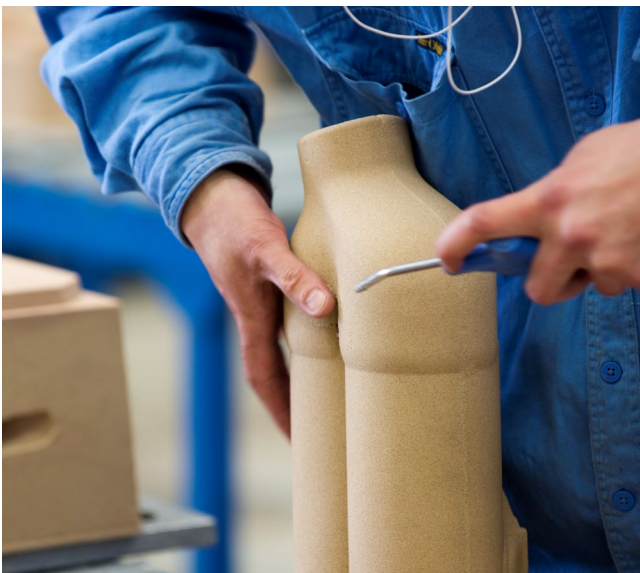
Harrop are also the preferred supplier of Eaton Supercharger and Traction Control technology including dual branded product designed and manufactured in-house. There are currently over 4,000 components in our portfolio, and this is growing daily as we continually develop more Harrop Performance Products.

Our high-profile car manufacturing customers have included Holden, HSV, FPV, Ford, Roush, Toyota, TRD and Lotus.

We also supply to race teams from categories including F1, NASCAR and V8 Supercars and an extensive range of drag, circuit and off-road competitors. Just as importantly, a large portion of our customers are performance enthusiasts and weekend warriors who are highly passionate about their ride. Please take a moment to review the following pages and learn why Harrop is the first choice in Superchargers.

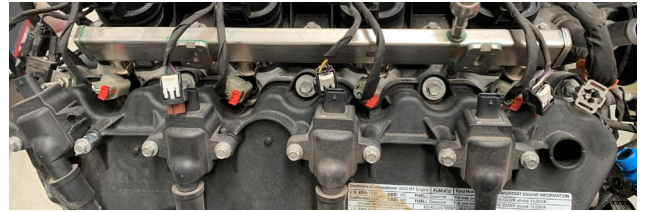
Thank you for choosing Harrop and enjoy your Harrop Enhanced ride.

- Team **HARROP**



REMOVAL OF THE NA MANIFOLD

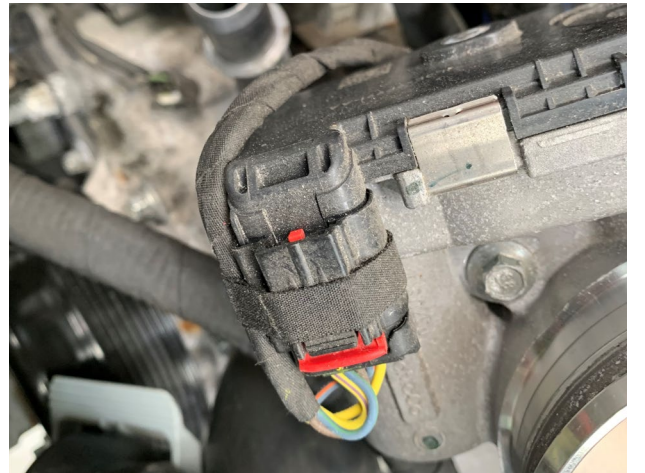
Disconnect/unplug the coils from the harness



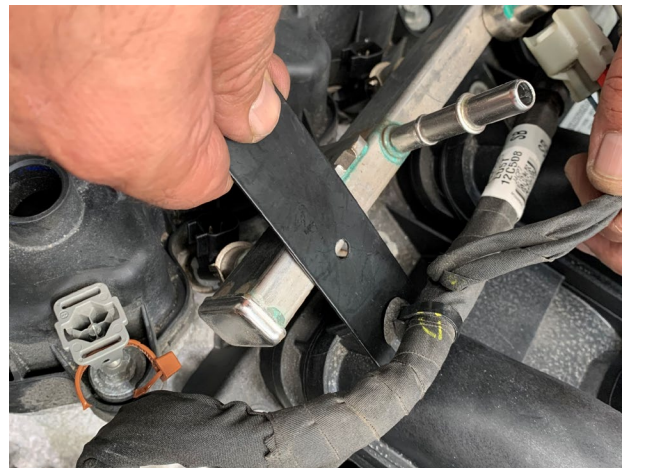
Disconnect/unplug the injectors electrically



Disconnect/unplug the throttle body, electrically



Unpick the harness from the NA manifold



Detach the engine breather from manifold



Disconnect the fuel cross over line

To unpack the supercharger manifold from the crate you will need to unscrew the packing sheet metal mounts from the crate, access to the nuts are on the underside of the crate.

REMOVAL OF THE NA MANIFOLD

Undo the manifold bolts and remove from engine

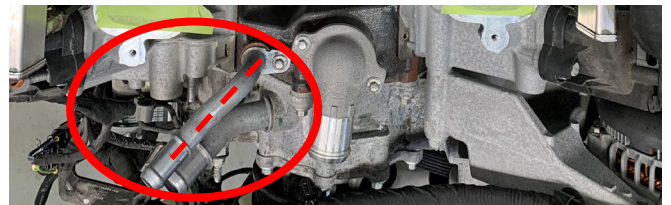


Tape up the intake ports

Undo the fuel rail bolts and remove the rails and injectors from engine

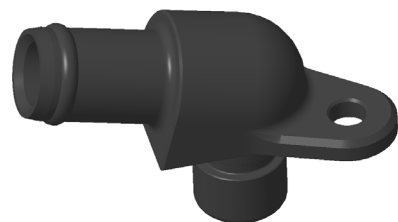


Undo and remove the 19mm water outlet



Transfer the O ring from the factory outlet to the new supplied outlet pictured on the right.

Install the supplied new low height water outlet



INSTALLATION OF SUPERCHARGER

Remove the port seals from NA manifold and install these on the supercharger manifold

Remove the throttle body from NA manifold

Remove the throttle body seal from NA manifold

Remove the masking tape from the ports

Install the supercharger assembly onto the engine

Using the supplied M6 x 30 long flanged screws secure the supercharger manifold to the head following the torque sequence. Torque bolts to 10-11Nm

Install the throttle body seal to supercharger inlet
Install the throttle body on to the supercharger inlet.
Torque bolts to 10-11Nm

Reinstall the injectors and fuel rails. Torque bolts to 10-11Nm

Reconnect the injectors, the coils and throttle body and the RH breather.

Install the belt as per the route in the image.

After having installed your heat exchanger and pump ensure you use coolant WSS-M97B44-D or 6277M,
FAILURE TO COMPLY WITH THIS SPECIFICATION WILL VOID ANY WARRANTY.

