

Tech Guide

Ford Godzilla 7.3 Supercharger



09/02/2023

Harrop Engineering develops and manufactures premium supercharger kits in Melbourne, Australia. Through 60 years of automotive performance Engineering, Harrop Engineering have successfully manufactured and supplied Superchargers to Automotive OEM programmes including TRD, Lotus Cars and Ford Australia. Harrop Engineering is certified to meet ISO 9001 standards of quality. OEM Quality, performance and vehicle integration are the foundation of Harrop Supercharger kits.



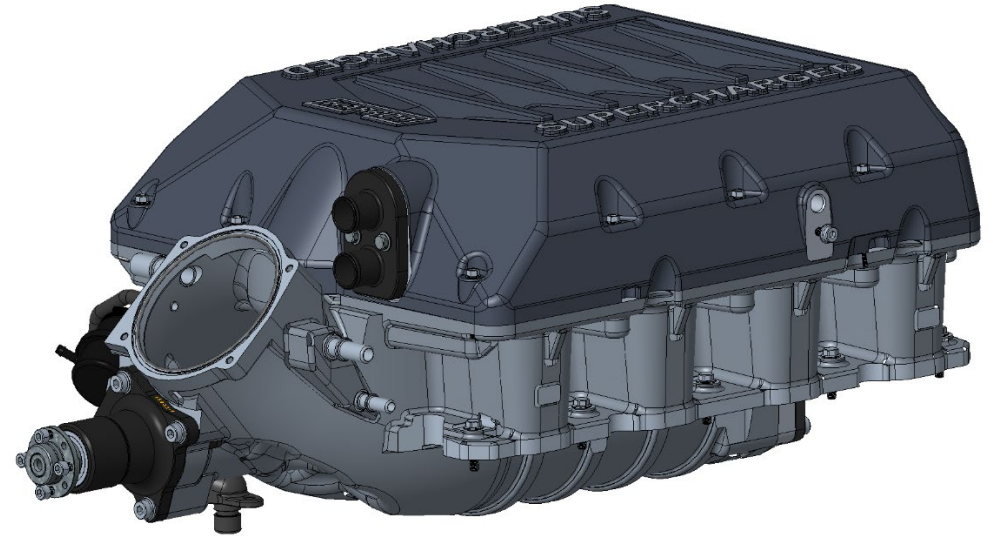
E N G I N E E R I N G P E R F O R M A N C E S I N C E 1 9 5 5

Tech Guide

Ford Godzilla 7.3 Supercharger



09/02/2023



Key Features:

- Engine kit P/N - 99-AMFD15068 for the TVS2650
- Inverted Large plenum design
- Single intercooler brick
- OEM throttle body adaptor (115mm with adaptor removed)
- Bosch TMAP 0281002514 2.5Bar
- 25mm water in / out intercooler lines
- 6PK supercharger drive from OEM belt path
- Retains OEM fuel rail / injector style (long body Bosch)

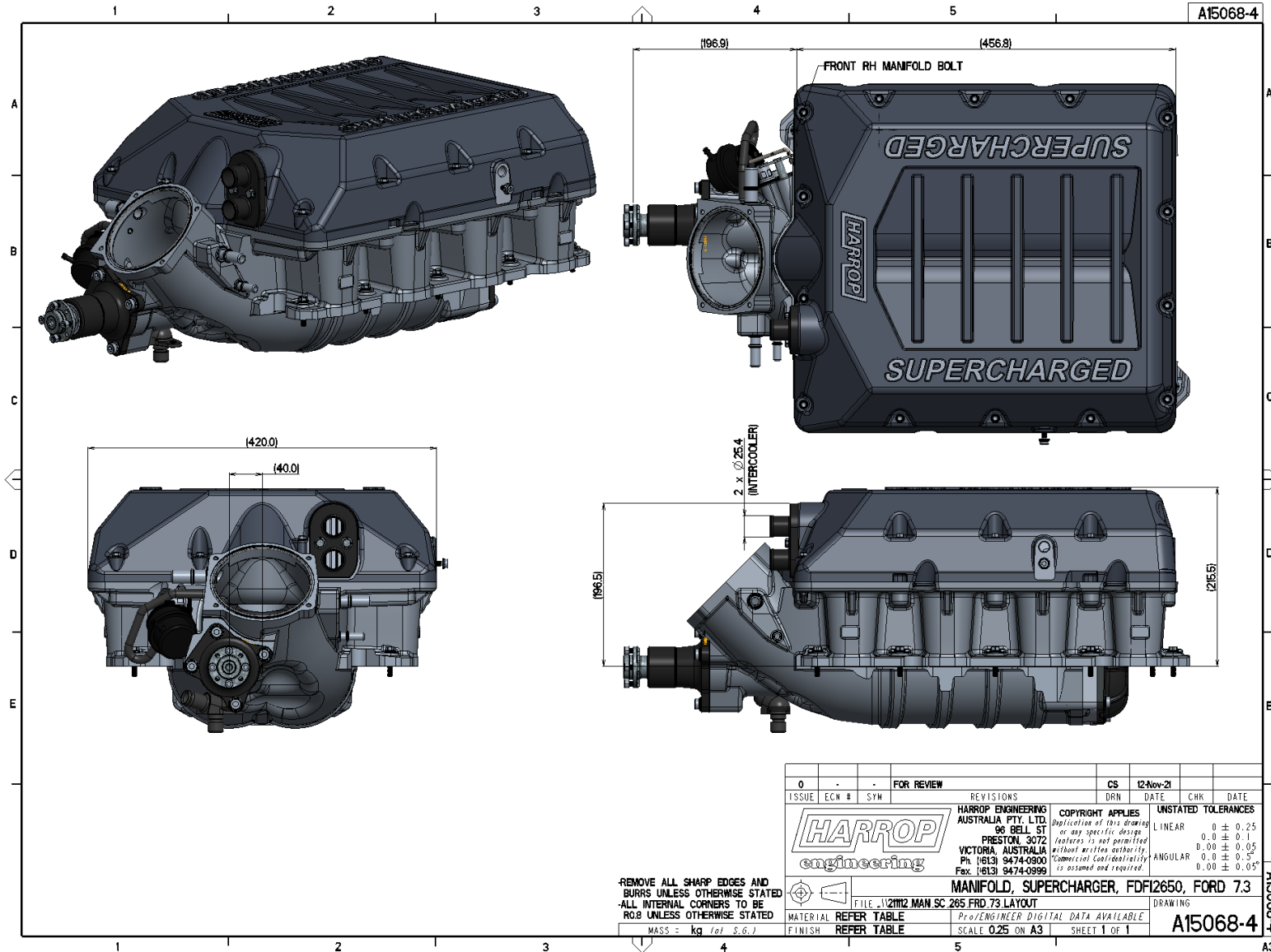
ENGINEERING PERFORMANCE SINCE 1955

Tech Guide

Ford Godzilla 7.3 Supercharger



09/02/2023



ISSUE	ECN #	SYN	FOR REVIEW	REVISIONS	CS	DRN	DATE	CHK	DATE
0	-	-	-	-	-	-	12-Nov-21	-	-
				HARROP ENGINEERING AUSTRALIA PTY. LTD. 96 BELL ST PRESTON, 3072 VICTORIA, AUSTRALIA Ph: 1(613) 9474-0900 Fax: 1(613) 9474-0999		COPYRIGHT APPLIES Duplication of this drawing on any specific design without written authority is not permitted. Commercial Confidentiality is assumed and required.		UNSTATED TOLERANCES LINEAR 0.0 ± 0.25 0.0 ± 0.1 0.00 ± 0.05 ANGULAR 0.0 ± 0.5° 0.00 ± 0.05°	
REMOVE ALL SHARP EDGES AND BURRS UNLESS OTHERWISE STATED -ALL INTERNAL CORNERS TO BE R0.8 UNLESS OTHERWISE STATED MASS = kg (of 5.6.)									
				FILE: \121112 MAN SC 285 FRD 73 LAYOUT MATERIAL REFER TABLE FINISH REFER TABLE		MANIFOLD, SUPERCHARGER, FDF12650, FORD 7.3 ProENGINEER DIGITAL DATA AVAILABLE SCALE 0.25 ON A3 SHEET 1 OF 1		DRAWING A15068-4	

ENGINEERING PERFORMANCE SINCE 1955

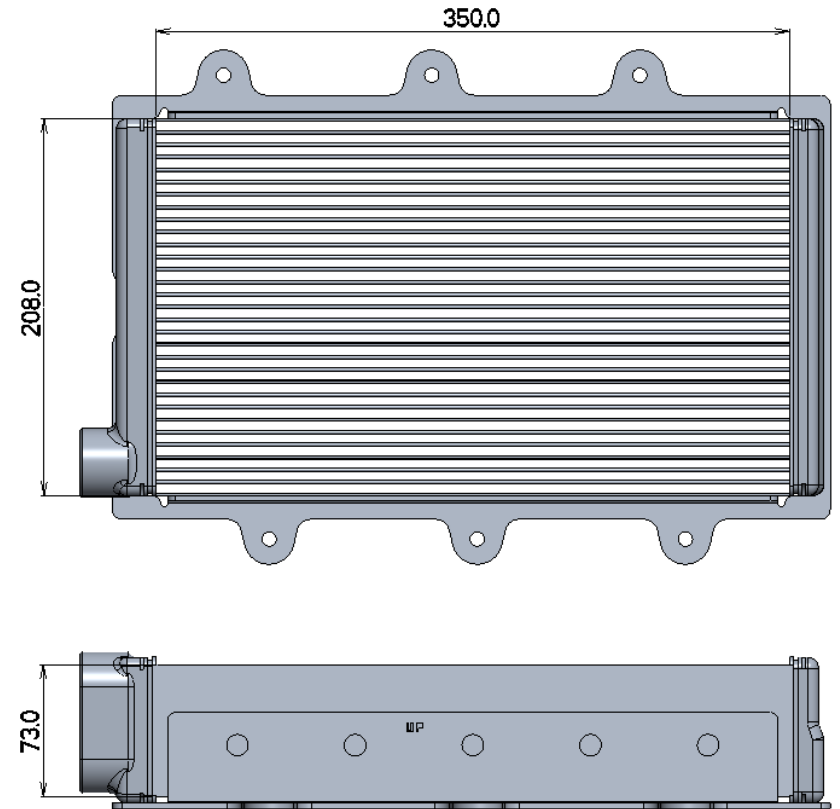
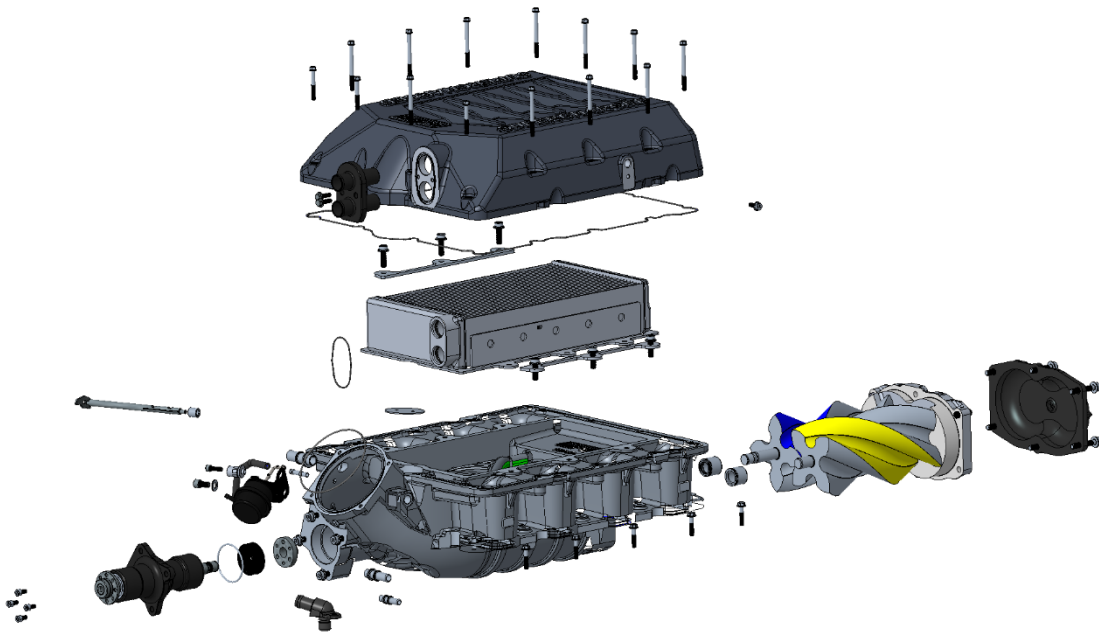
Tech Guide

Ford Godzilla 7.3 Supercharger



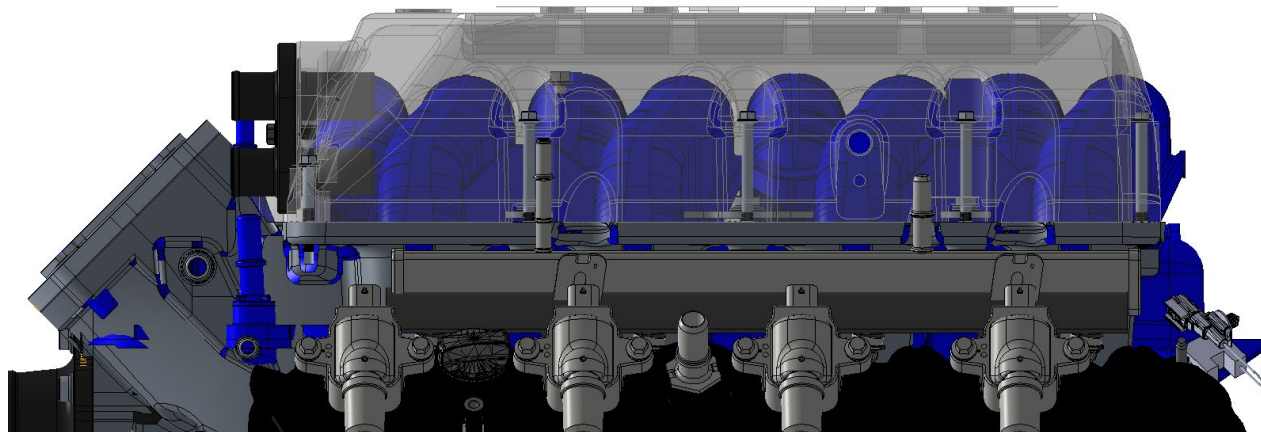
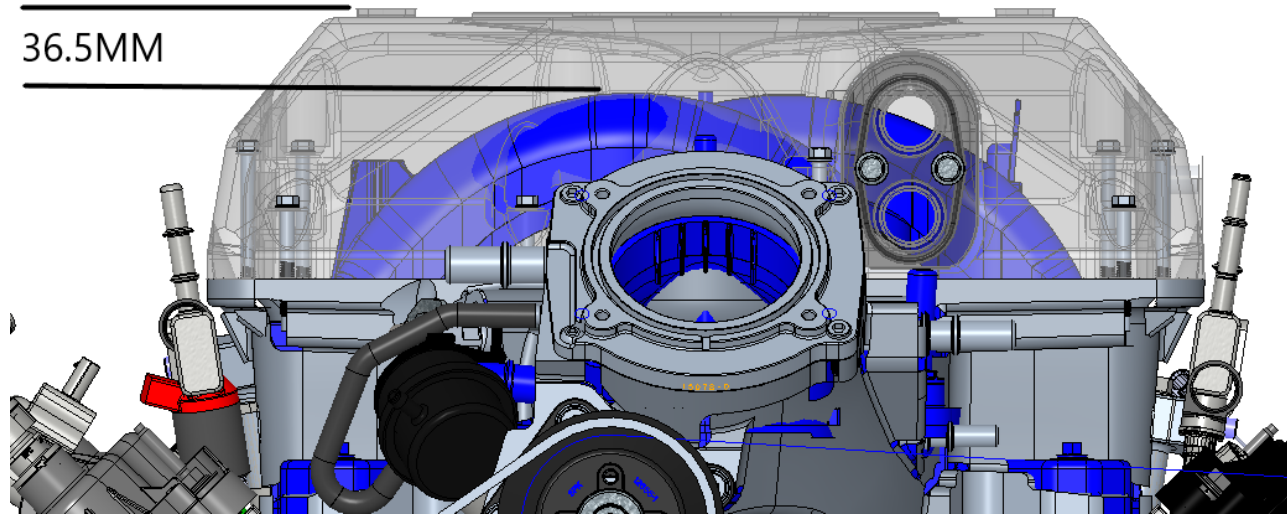
09/02/2023

Intercooler layout/dimensions:



ENGINEERING PERFORMANCE SINCE 1955

Supercharger manifold assembly vs OEM 7.3 Godzilla manifold:



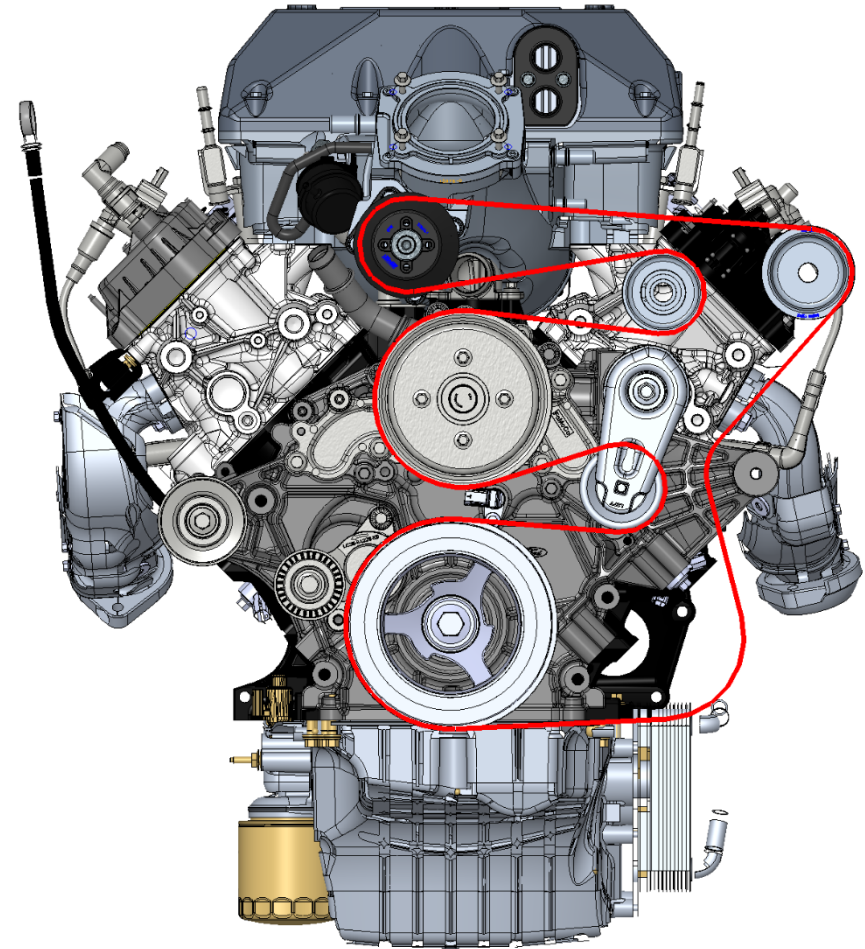
ENGINEERING PERFORMANCE SINCE 1955

6PK belt path

- Shown with single alternator in F250 location including P/S pump

6PK Pulleys / belt length (No P/S pump)

- 65mm - 99-PLY13099 - 6PK2555
- 70mm - 99-PLY11625 - 6PK2555
- 75mm - 99-PLY11624 - 6PK2555
- 80mm - 99-PLY11623 - 6PK2567
- 85mm - 99-PLY11622 - 6PK2580
- 90mm - 99-PLY12655 - 6PK2590



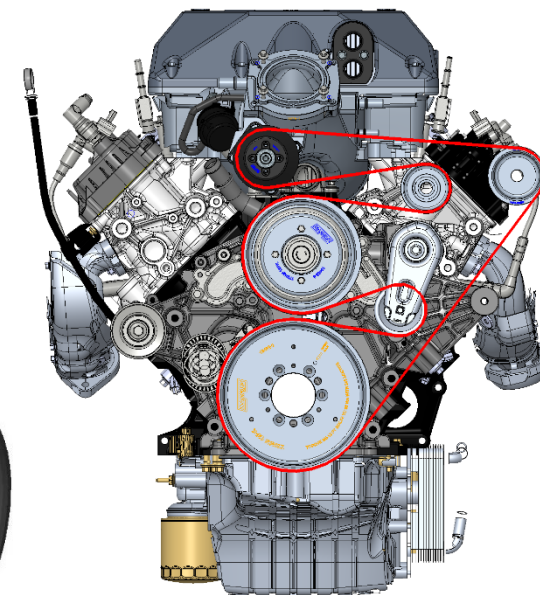
12PK belt path

- Shown with single alternator in F250 location
- 12PK 220mm crank pulley installed on ATI balancer (ATI918073) Harrop complete ATI balancer assembly part number including the pulley **99-APLY15811**
- Requires base 12PK FEAD drive kit that includes alternator and water pump pulleys, Harrop part number **99-AKIT15814**
- Retains rear 6PK A/C drive
- Belt - Gates HD K121049HD (12PK2666)
- Supercharger pulleys 65mm-80mm to be selected from table in combination with tensioner and idler pulleys from chart below.
- Speeds shown below assume **7000** engine RPM
- Recommend a crankshaft keyway is added for ATI balancer / 12PK
- 12PK Pulley only, PN 99-PLY15482

99-AKIT15814



99-APLY15811

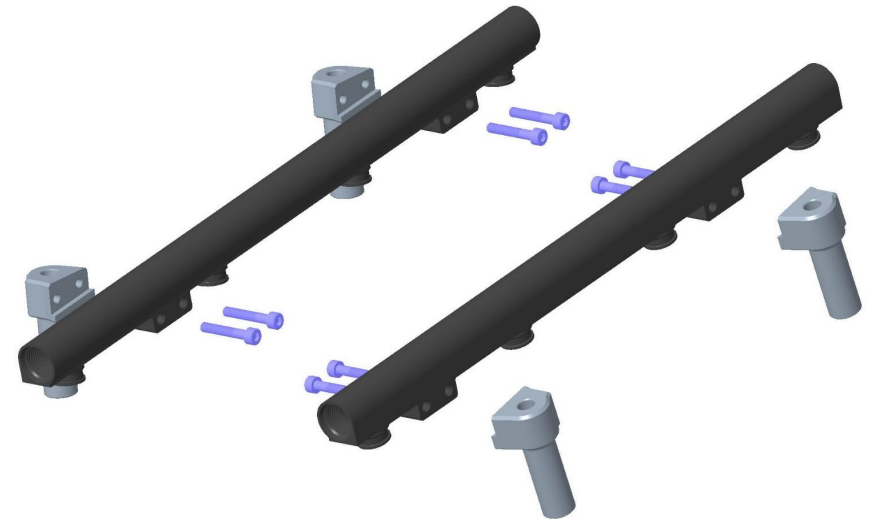
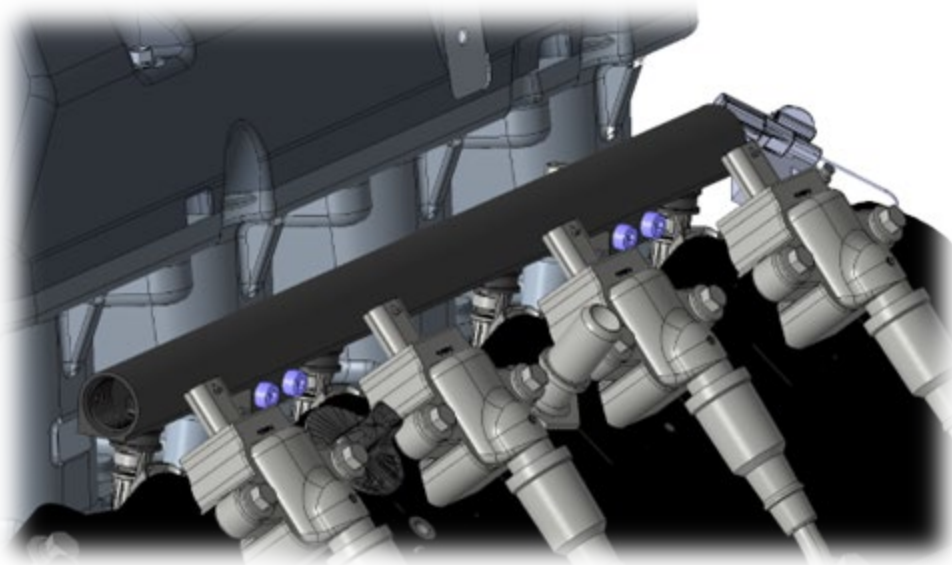


Crank Pulley (mm)	S/C Pulley (mm)	S/C Pulley Part #	Tensioner Pulley (mm)	Tensioner Pulley Part #	Idler Pulley (mm)	Idler Pulley Part #	Belt	Ratio	S/C Speed	S/C Speed Gain
220	65	99-PLY15491-GT	75	99-APLY15332	75	99-APLY15332	65-12PK2666	3.385	23692	1692
220	70	99-PLY15492-GT	75	99-APLY15332	75	99-APLY15487	65-12PK2666	3.143	22000	1467
220	75	99-PLY15493-GT	70	99-APLY15487	70	99-APLY15487	65-12PK2666	2.933	20533	1283
220	80	99-PLY15494-GT	70	99-APLY15487	70	99-APLY15487	65-12PK2666	2.750	19250	0

ENGINEERING PERFORMANCE SINCE 1955

Fuel rail – optional

- PN **99-ARAL15519** (comes as a kit, components as per RH image)
- Extruded fuel rail including billet mounts
- -8 both ends
- For use with long body Bosch injectors



ENGINEERING PERFORMANCE SINCE 1955

Tech Guide

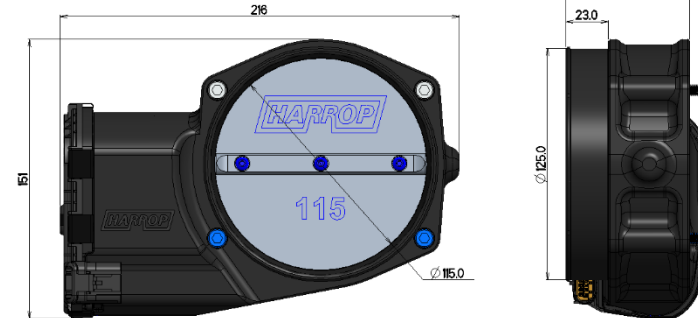
Ford Godzilla 7.3 Supercharger



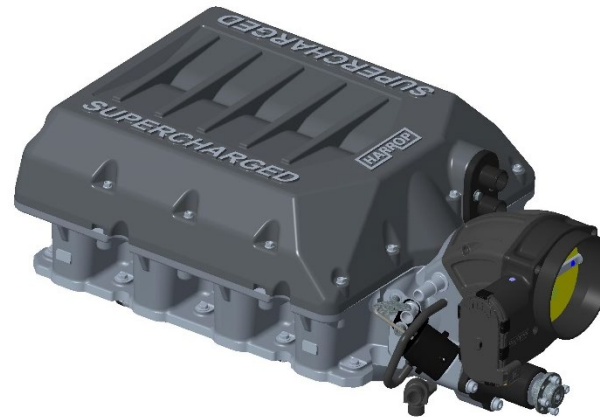
09/02/2023

Throttle body / Adaptor options

- 115 Throttle body, direct bolt on to Supercharger inlet
- Compact design (67mm thick) to allow for hood clearance
- Analogue throttle body option (**99-AHSG15694**)
- 45 Degree 115mm billet adaptor - optional (**99-AADP15901**)
- 45 Degree 87mm billet adaptor – optional (**99-AADP15902**)
- Adaptor 80mm – OEM throttle – optional (**99-AADP15078**)



115mm Throttle body option, no adaptor



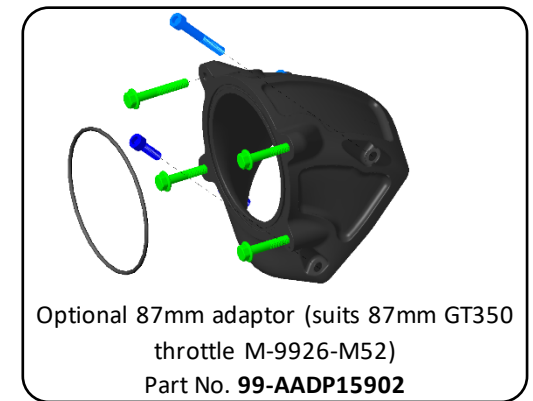
115mm throttle body and optional 45-degree adaptor



Optional 115mm adaptor
Part No. **99-AADP15901**



Optional 80mm adaptor
(suits OEM throttle)
Part No. **99-AADP15078**



Optional 87mm adaptor (suits 87mm GT350
throttle M-9926-M52)
Part No. **99-AADP15902**

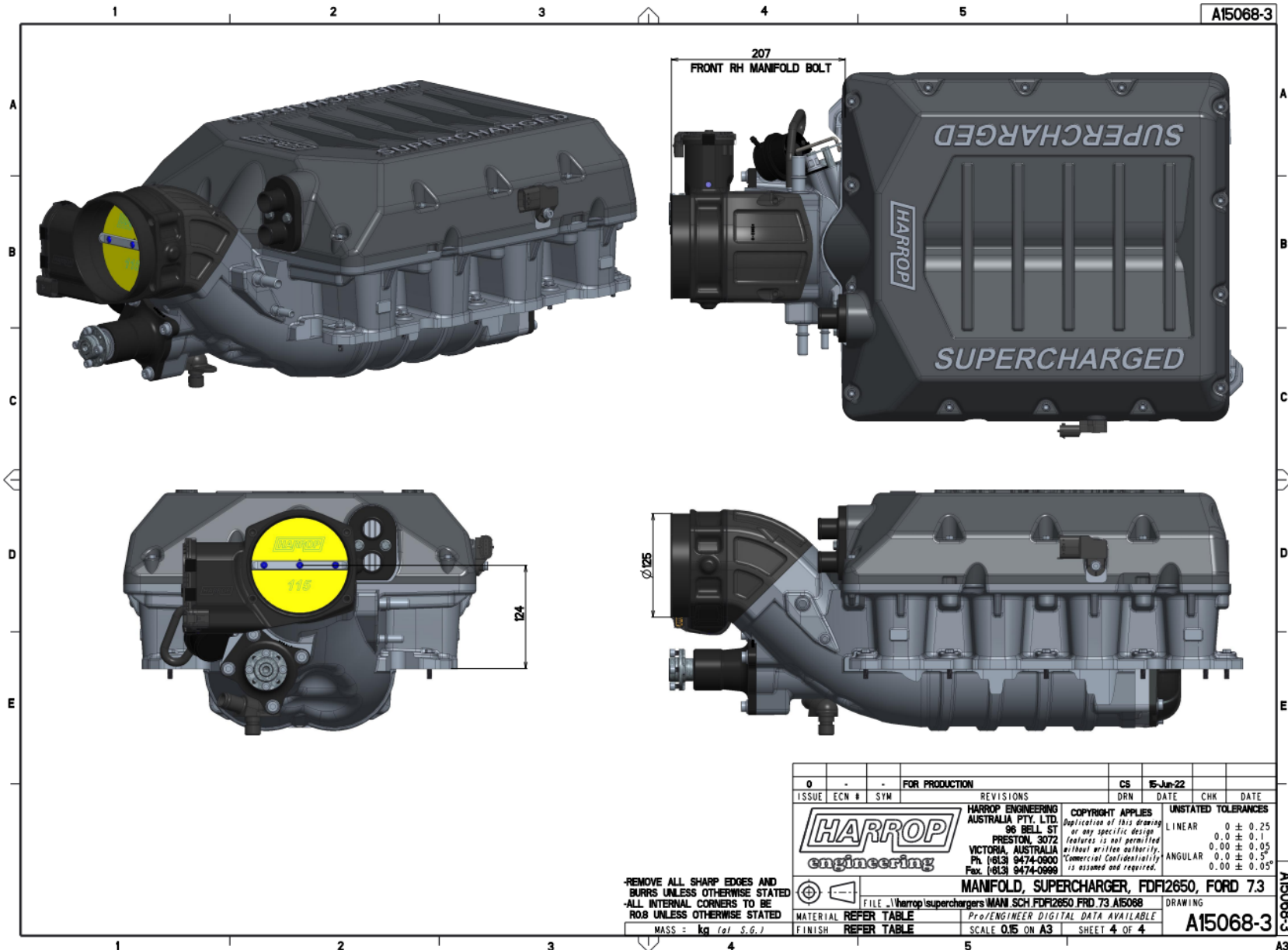
ENGINEERING PERFORMANCE SINCE 1955

Tech Guide

Ford Godzilla 7.3 Supercharger



09/02/2023



0			FOR PRODUCTION			CS	15-Jun-22			
ISSUE	ECN #	SYM	REVISIONS			DRN	DATE	CHK	DATE	
			HARROP ENGINEERING AUSTRALIA PTY. LTD. 96 BELL ST PRESTON, 3072 VICTORIA, AUSTRALIA Ph: (613) 9474-0500 Fax: (613) 9474-0599			COPYRIGHT APPLIES <i>Depiction of this drawing or any specific design features is not permitted without written authority. Commercial Confidentiality is assumed and required.</i>		UNSTATED TOLERANCES LINEAR 0 ± 0.25 0.0 ± 0.1 0.00 ± 0.05 ANGULAR 0.0 ± 0.5° 0.00 ± 0.05°		
			MANIFOLD, SUPERCHARGER, FDF12650, FORD 7.3			FILE: \\harrop\superchargers\MAN_SCH_FDF12650_FRD_73_A15068		DRAWING		
			MATERIAL REFER TABLE			Pro/ENGINEER DIGITAL DATA AVAILABLE		A15068-3		
			FINISH REFER TABLE			SCALE 0.15 ON A3		SHEET 4 OF 4		

REMOVE ALL SHARP EDGES AND BURRS UNLESS OTHERWISE STATED
 ALL INTERNAL CORNERS TO BE RO.8 UNLESS OTHERWISE STATED
 MASS = kg (of S.G.)

External oil pump – optional (99-AKIT15522)

- Designed for use where OEM sump and oil pump cannot be used
- Replaces A/C compressor
- To suit Peterson 04-1020 or 04-1024 pump (to be confirmed)
- Utilizes ATI Balancer (ATI918073) with hub modifications and the fitment of external oil pump drive pulley.

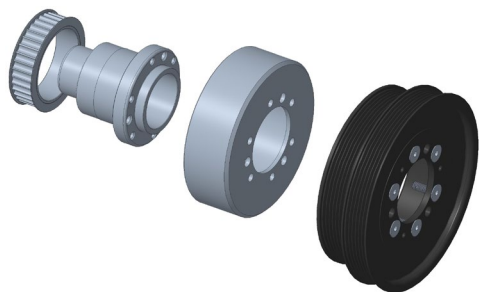
Oil Pump Drive 35T

Oil Pump Driven 56T

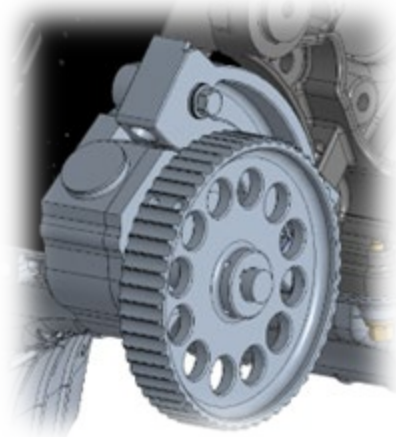
Drive Ratio 0.625



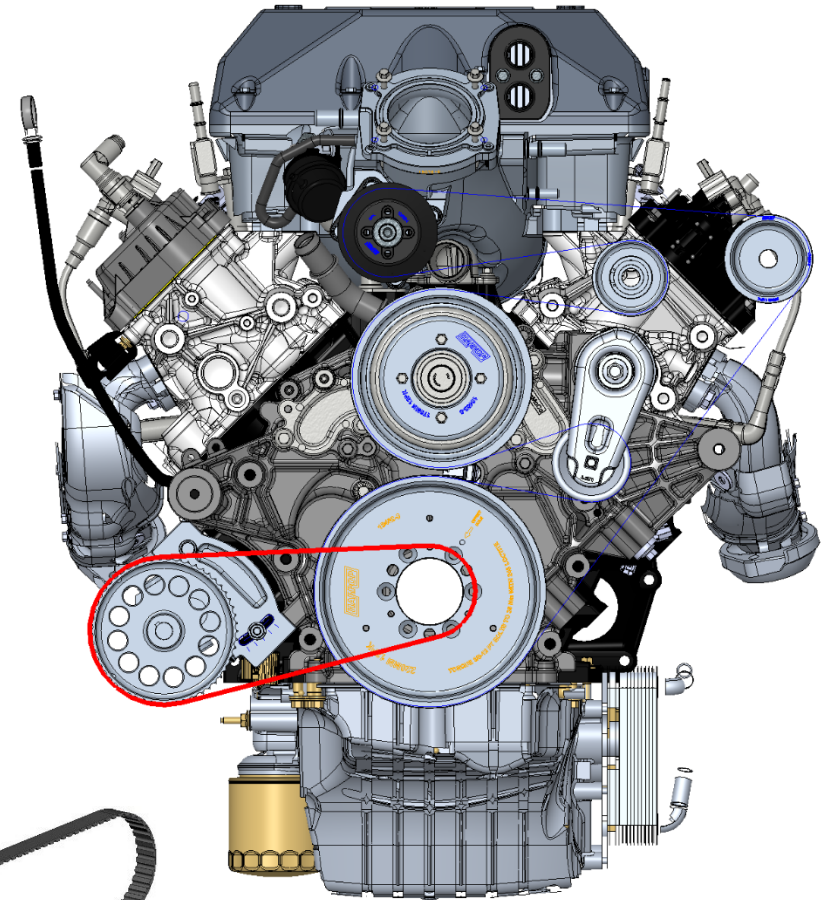
99-APLY15761 (12PK)



99-APLY15861 (6PK)



99-AKIT15522



ENGINEERING PERFORMANCE SINCE 1955

Tech Guide

Ford Godzilla 7.3 Supercharger



09/02/2023

Performance Table: 7.3L and Harrop TVS2650

ENGINE	COMPONENTS	POWER CORRECTION	POWER HP	TORQUE ft lbs	BOOST	SC PULLEY DIAMETER	FUEL
Stock 7.3L Godzilla	87mm Ford GT350 Throttle Body	SAE 2004	495 hp	567 ft lbs	-	-	98 RON
Stock 7.3L Godzilla	Calibration - Fuel and Timing	SAE 2004	550 hp	581 ft lbs	-	-	98 RON
Stock 7.3L and Harrop TVS2650 Supercharger	Addition of larger TVS2650 Supercharger, 87mm Ford GT350 Throttle Body	SAE 2004	803 hp	789 ft lbs	12 PSI	85MM	98 RON
Stock 7.3L and Harrop TVS2650 Supercharger	Above combination running on E85 fuel	SAE 2004	944 hp	972 ft lbs	18 PSI	65MM	E85
Stock 7.3L and Harrop TVS2650 Supercharger	Above combination with the addition of 102mm Throttle Body	SAE 2004	1015 hp	988 ft lbs	20 PSI	65MM	E85
Dandy Engines built 7.3L Godzilla and Harrop TVS2650 Supercharger	Upgraded rods, pistons, camshaft. Harrop oil pump, Harrop 12pk Front Drive System and Harrop 115mm Throttle Body	SAE 2004	1190 hp	967 ft lbs	15 PSI	80MM	E85
Dandy Engines built 7.3L Godzilla and Harrop TVS2650 Supercharger	Upgraded rods, pistons, camshaft. Harrop oil pump, Harrop 12pk Front Drive System and Harrop 115mm Throttle Body	SAE 2004	1317 hp	1158 ft lbs	19 PSI	65MM	E85

ENGINEERING PERFORMANCE SINCE 1955