



**AEROMOTIVE**  
**Part # 18720 and 18721**  
**FUEL FILLER 1.5"**  
**INSTALLATION INSTRUCTIONS**

**WARNING!**



Always be aware of flammable situations. Drilling and grinding can be potential ignition sources. Extinguish all open flames, prohibit smoking, and eliminate all sources of ignition in the area of the vehicle and workspace before proceeding with the installation. Ensure you are working in a well-ventilated area with an approved fire extinguisher nearby.

**WARNING!**



etc.

Installation of this product requires modification to a fuel tank/ the fuel system, failure to satisfy all safety considerations will result in fire, explosion, injury and/or loss of life to yourself and/or others. All fuel system components **MUST** be located as far from heat sources as possible, like exhaust, engine block,

**WARNING!**



Mechanical and hydraulic lifting devices can tip over or lower accidentally due to incorrect maneuvering or technical errors. A falling object can cause injury and/or loss of life to yourself and/or others. When working under the vehicle, always use stands, and ensure that the ground or floor is stable and level. Never crawl under a vehicle which is only supported by a jack.

**WARNING!**



The fuel system is under pressure. Do not open the fuel system until the pressure has been relieved. Refer to the appropriate vehicle service manual for the procedure and precautions for relieving the fuel system pressure.

**CAUTION!**



When installing this product always wear safety glasses and other appropriate safety apparel. A drilling operation will cause flying metal chips. Flying metal chips can cause eye injury.

**CAUTION:**



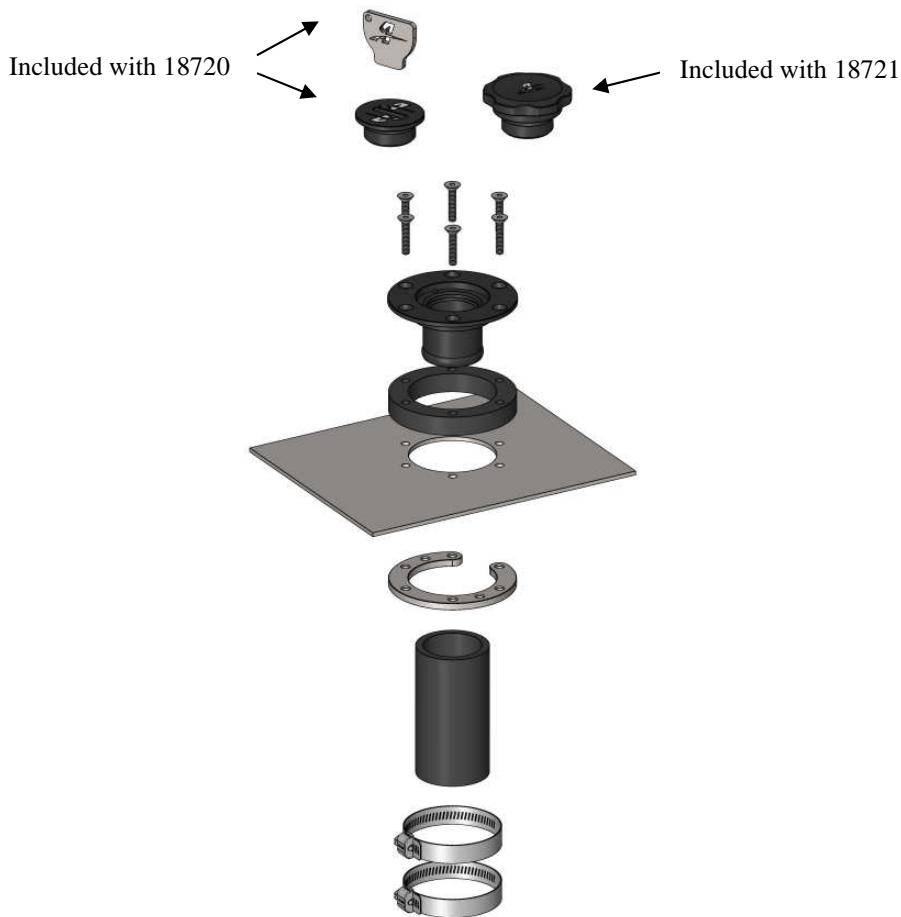
Installation of this product requires detailed knowledge of automotive systems and repair procedures. We recommend that this installation be carried out by a qualified automotive technician. Careless installation of this product can result in damage to the product, injury or loss of life to yourself and/or others.

## Compatible Fuels:

Pump Gas  
Race Gas  
E85  
Alcohol/Ethanol

### Tools Required for Typical Installation

Drill  
#2 Drill Bit  
2 ¼" Metal Hole Saw  
Tape Measure  
Center Punch  
Die Grinder with Deburr Bit or Round File  
5/16 Nut Driver  
Phillips Head Screwdriver or Bit for Drill



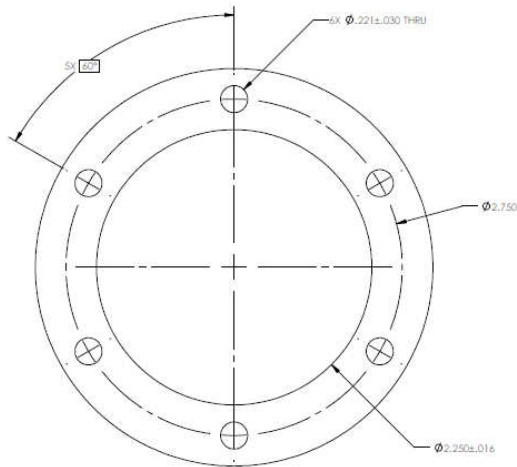
### Typical Installation Procedure

1. Locate and center punch the middle of the tank filler neck location.
2. Drill a pilot hole with the ¼" drill bit.

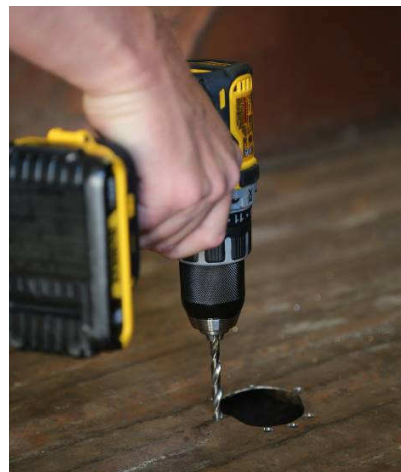
3. Using the 2 1/4" metal hole saw, drill the hole for the fuel filler cap housing using the pilot hole as the center. Deburr the hole with die grinder or round file once the hole is drilled.



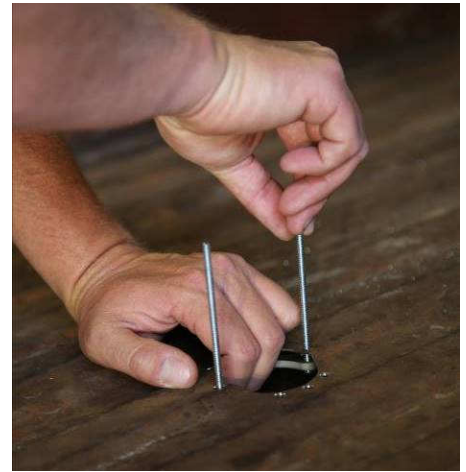
4. Loosely install the filler cap in the hole as shown in the picture below. Use the cap as a guide to mark the six mounting holes for the filler cap housing. Center punch the holes and drill with a #2 drill bit. Deburr the holes once drilled.



**Note: Example only. Image is not to scale.**

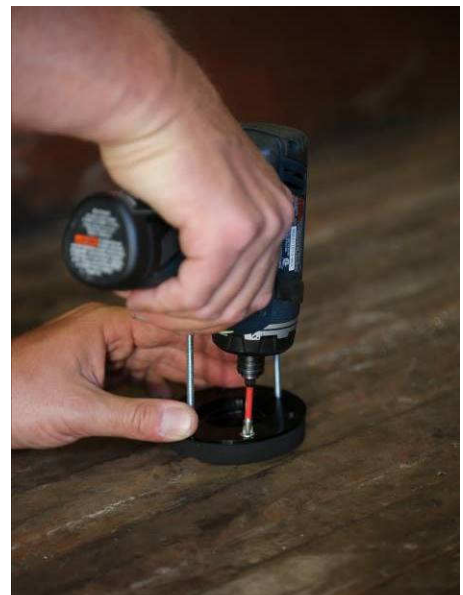


5. Insert the retaining ring through the hole and line up six holes in the bed with the threaded holes in the retaining ring. Using the two provided 10-24 x 4" studs, thread them into two of the six mounting holes, preferably two holes that are directly across from each other. Hold onto one of the studs to keep the retaining ring from falling. **Note: Have the gasket, filler cap housing, and screws nearby for this step.** See pictures below.



6. The studs are used as an installation tool and will be removed later during assembly.

7. Slide the gasket and filler cap housing over the studs and position on the bed floor. Once in position, start but don't fully tighten the 10-24 screws. Tighten in a cross pattern to start compressing the gasket. See pictures below.

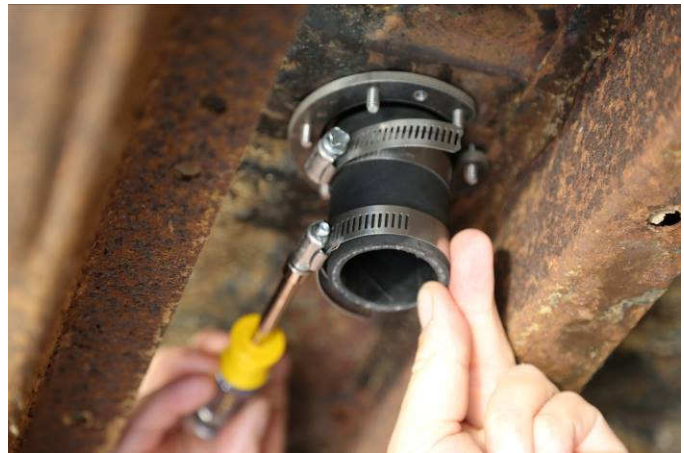


8. Once four of the screws are started, remove the two studs and insert the two remaining screws in the holes. Now fully tighten the filler cap screws, they just need to be tight enough to compress the gasket and sit flush against the mounting surface. Do not overtighten the screws to avoid damaging the housing.

9. Next, install the fuel filler cap. (18720 uses a key. 18721 is a twist cap.)



10. From the backside, install the filler neck hose and tighten the filler cap housing with one of the hose clamps. Now, very loosely tighten the second hose clamp near the bottom of the hose. Just to secure it in position for the tank filler neck, the clamp will be fully tightened once the tank or filler neck is installed.



11. When installing the tank ensure the filler neck of the tank slides into the fuel filler hose. **Note: Ensure the filler neck hose is not distorted or wrinkled before fully raising the tank into position.**

12. Once the tank is secured and the filler neck is aligned with the filler hose, tighten the lower hose clamp.

# **Contact US**

## **Aeromotive Product Warranty, Policy and Procedure: Retail**

All Aeromotive products sold are warranted free from defects in materials and workmanship for a period of one year from the original date of purchase. No warranty claim will be valid without authentic, dated proof of purchase.

This warranty is to the original retail purchaser and none other and is available directly from Aeromotive and not through any point of distribution or purchase.

If a defect is suspected, the retail purchaser must contact Aeromotive directly to discuss the problem, possible solutions and obtain a Return Goods Authorization (RGA), if deemed necessary by the company. All returns must be shipped freight pre-paid to the company and with valid RGA before they will be processed.

Aeromotive will examine any product returned with proper authorization to determine if the failure resulted from a defect or from abuse, improper installation, misapplication or alteration. Aeromotive will then, at its sole discretion return, repair or replace the product.

**Complete Warranty Information is available at:** <https://aeromotiveinc.com/product-warranty/>

**RGA NUMBER REQUIRED FOR ALL RETURNS TO AEROMOTIVE.**

To obtain an RGA number, please call (913) 647-7300 and ask for the Returns and Repairs department.

- **Shipping Address**

Aeromotive Inc.  
7805 Barton St.  
Lenexa, KS 66214

- **Sales & Returns**

Aeromotive Inc.  
11414 W 79th Street.  
Lenexa, KS 66214

**General Inquiries and Tech Line:** (913) 647-7300

**General Email:** [info@aeromotiveinc.com](mailto:info@aeromotiveinc.com)

**Tech Email:** [tech@aeromotiveinc.com](mailto:tech@aeromotiveinc.com)

*The Aeromotive Tech Lines are open Monday through Friday from 9:30AM to 5:00PM Central Standard Time.*



**WARNING:** This product can expose you to chemicals, including chromium, which is known to the State of California to cause cancer or birth defects or other reproductive harm. For more information, visit: [www.p65Warnings.ca.gov](http://www.p65Warnings.ca.gov)

### ***AEROMOTIVE, INC. LIMITED WARRANTY***

This Aeromotive Product, with proof of purchase dated on or after January 1, 2003, is warranted to be free from defects in materials and workmanship for a period of one year from the original date of purchase. No warranty claim will be valid without authentic, dated proof of purchase.

This warranty is to the original retail purchaser and none other and is available directly from Aeromotive and not through any point of distribution or purchase.

If a defect is suspected, the retail purchaser must contact Aeromotive directly to discuss the problem, possible solutions and obtain a Return Goods Authorization (RGA), if deemed necessary by the company. Please call 913-647-7300 and dial option 3 for the technical service dept. All returns must be shipped freight pre-paid to the company and with valid RGA before they will be processed.

Aeromotive will examine any product returned with the proper authorization to determine if the failure resulted from a defect or from abuse, improper installation, misapplication or alteration. Aeromotive will then, at it's sole discretion, return, repair or replace the product.

If any Aeromotive product is determined defective, buyer's exclusive remedy is limited in value to the sale price of the good. In no event shall Aeromotive be liable for incidental or consequential damages.

Aeromotive expressly retains the right to make changes and improvements in any product it manufactures and sells at any time. These changes and improvements may be made without notice at any time and without any obligation to change the catalogs or printed materials.

Aeromotive expressly retains the right to discontinue at any time and without notice any Aeromotive product that it manufactures or sells.

This warranty is limited and expressly limits any implied warranty to one year from the date of the original retail purchase on all Aeromotive products.

No person, party or corporate entity other than Aeromotive shall have the right to: determine whether or not this Limited Warranty is applicable to any Aeromotive product, authorize any action whatsoever under the terms and conditions of this Limited Warranty, assume any obligation or liability of any nature whatsoever on behalf of Aeromotive under the terms and conditions of this Limited Warranty.

This Limited Warranty covers only the product itself and not the cost of installation or removal.

This Limited Warranty is in lieu of and expressly excludes any and all other warranties, expressed or implied. This Limited Warranty gives you specific legal rights, and you may also have other rights which vary from state to state.