



ARH EXHAUST INSTALLATION GUIDE

TRX DODGE RAM HEADERS

880 Grand Blvd. Deer Park NY, 11729 • (631) 608.1986



Dear ARH Owner,

Congratulations on your purchase of an American Racing Headers™ Exhaust System. You have made an outstanding choice for performance upgrades of your vehicle's exhaust system. Here at American Racing Headers,™ (ARH), we highly recommend utilizing a qualified performance shop, equipped with all the necessary safety equipment, tools and experience required to assure proper installation of this system. However, if you decide to perform the installation yourself, we are here and happy to provide guidance.

It's Imperative That You Read and Understand the Following...

Ensure the installer uses all under car safety precautions, including eye protection, jack stands (if working on the ground), wheel chocks etc. By installing your ARH Exhaust System, you indicate that you have read this document and you agree with the terms stated below. It is the responsibility of the purchaser and installer to follow all installation instruction guidelines and safety procedures supplied with your new ARH Exhaust System. American Racing Headers™ assumes no responsibility for damages occurring from misuse, abuse, improper installation, improper operation, lack of responsible care, or all previously stated reasons resulting from incompatibility with other manufacturer's products and/or systems. If you should have any questions regarding our warranty policy, installation, or any other matter pertaining to your new American Racing Headers™ Exhaust System, please give us a call during business hours at 631-608-1986. Thank You!

Sincerely,

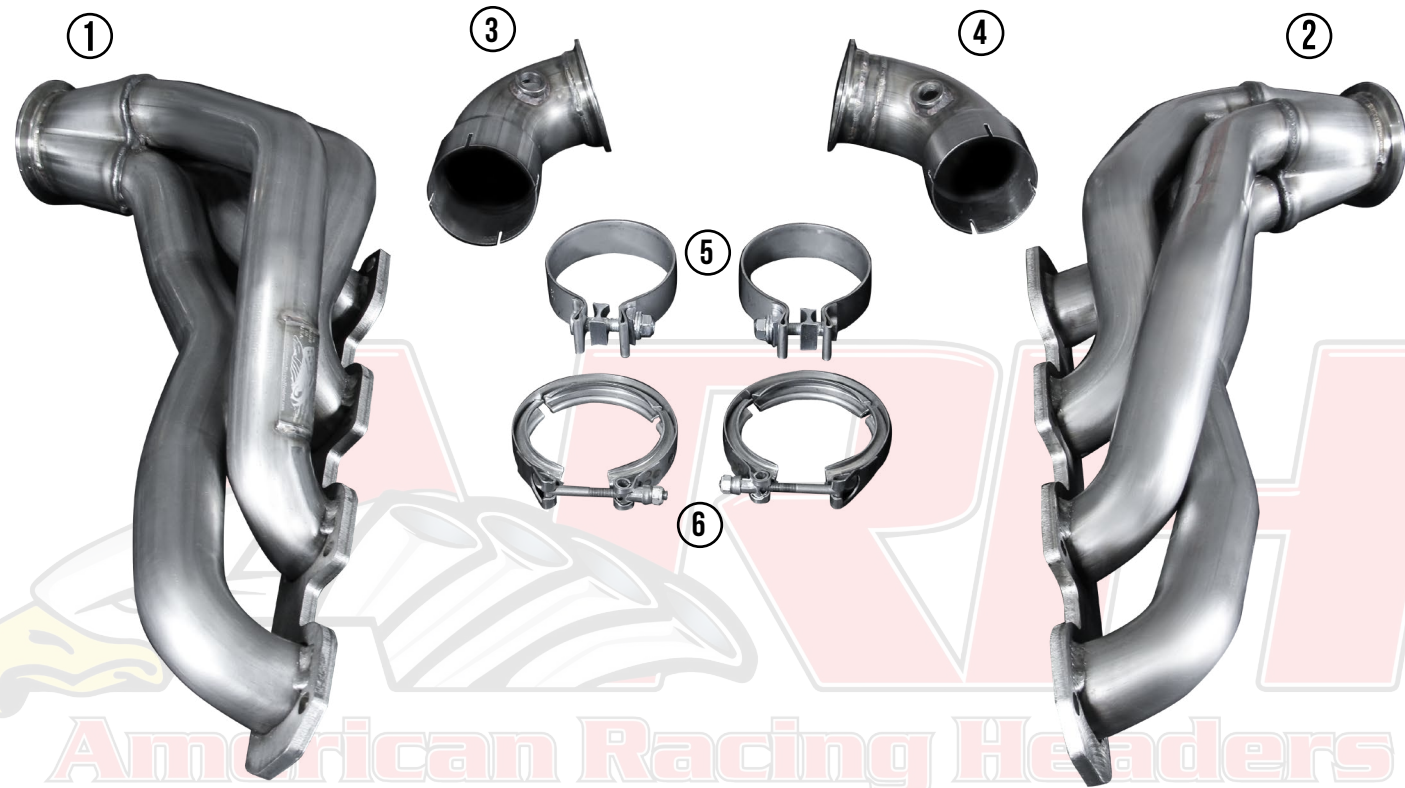
American Racing Headers

ARH INSTALLATION GUIDE

TRX DODGE RAM HEADER SYSTEM



TRX DODGE RAM HEADER SYSTEM

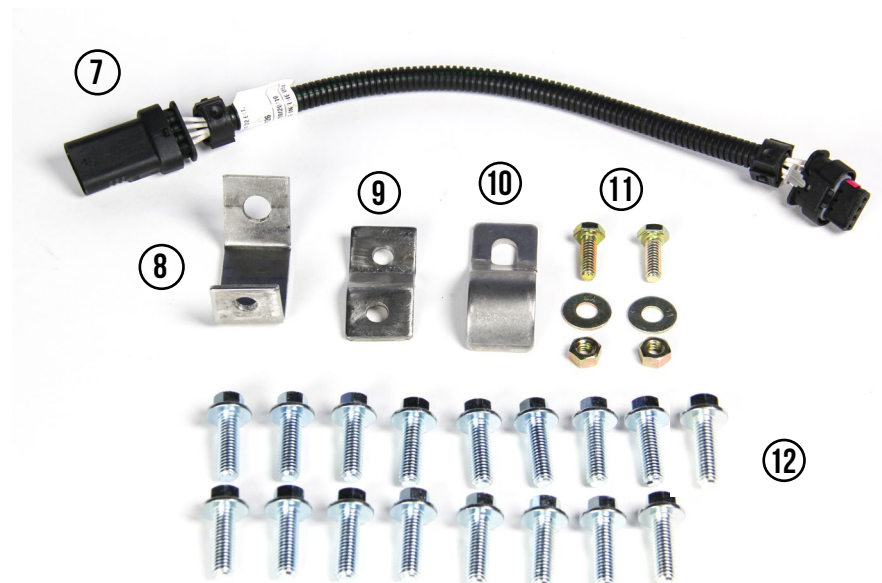


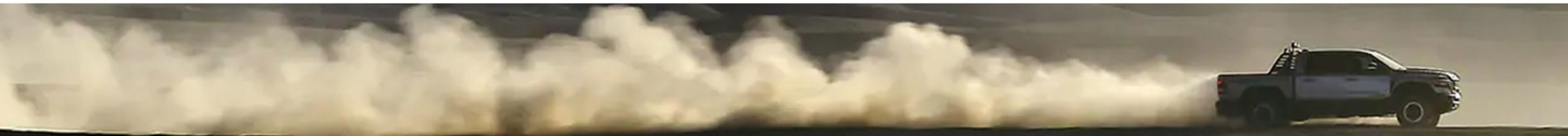
TRX DODGE RAM HEADER SYSTEM CHECK LIST

| ITEM # | DESCRIPTION | QTY |
|---|--|-----|
| HEADERS AND FACTORY CONNECTION PIPES | | |
| 1 | Passenger Side Header | 1 |
| 2 | Driver Side Header | 1 |
| 3 | Passenger Side Connection Pipe | 1 |
| 4 | Driver Side Connection Pipe | 1 |
| 5 | 3.5" Clamp | 2 |
| 6 | V-Band | 2 |
| 7 | O2 Extension Harness | 1 |
| 8 | C-Bracket | 1 |
| 9 | S-Bracket | 1 |
| 10 | Shifter Cable Bracket | 1 |
| 11 | 1/4"-20 x 3/4" Grade 8 Bolt, Washer, Nut | 2 |
| 12 | Grade 8 Header Bolt | 17 |

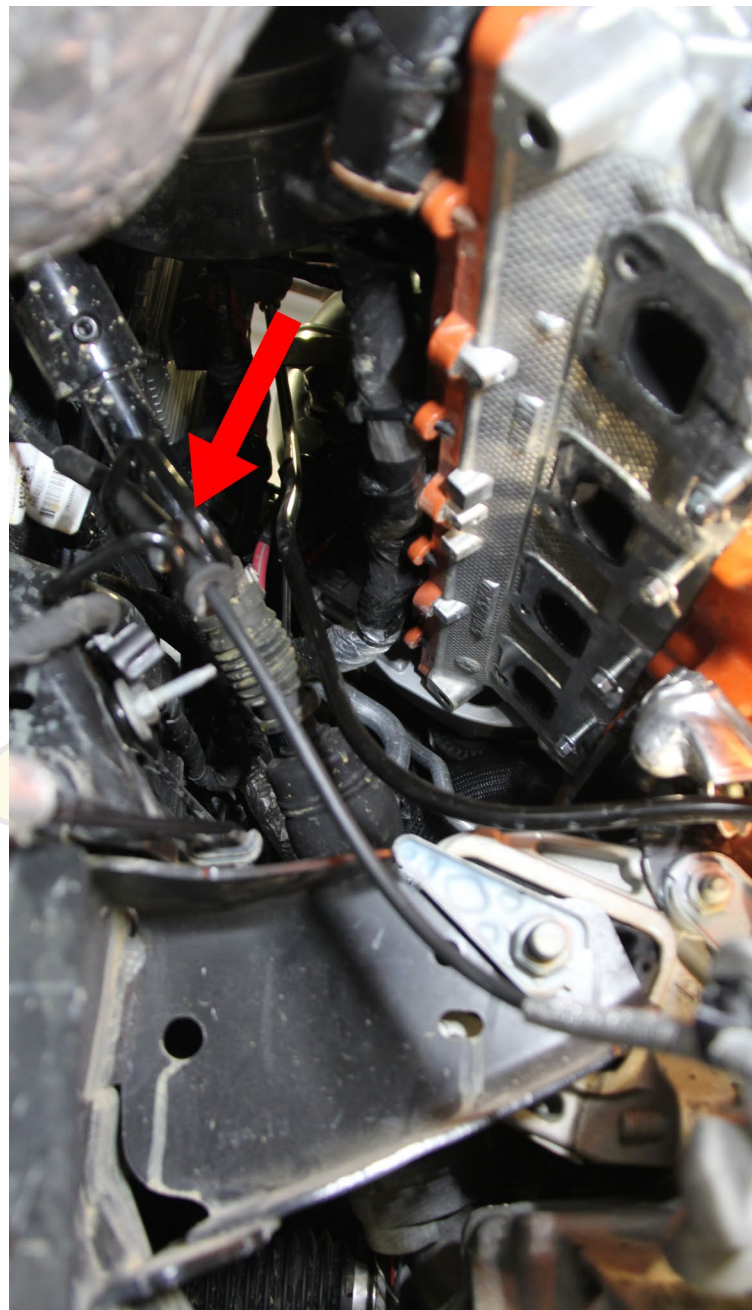
***NOTE:** ARH Strongly advises this installation be done along side a professional.

TRX DODGE RAM KIT BOX





FACTORY REMOVAL GUIDE



REMOVE: FACTORY SHIFTER CABLE BRACKET

» On the driver's side you will need to remove the factory shifter cable bracket from your TRX after you have removed the factory manifolds.

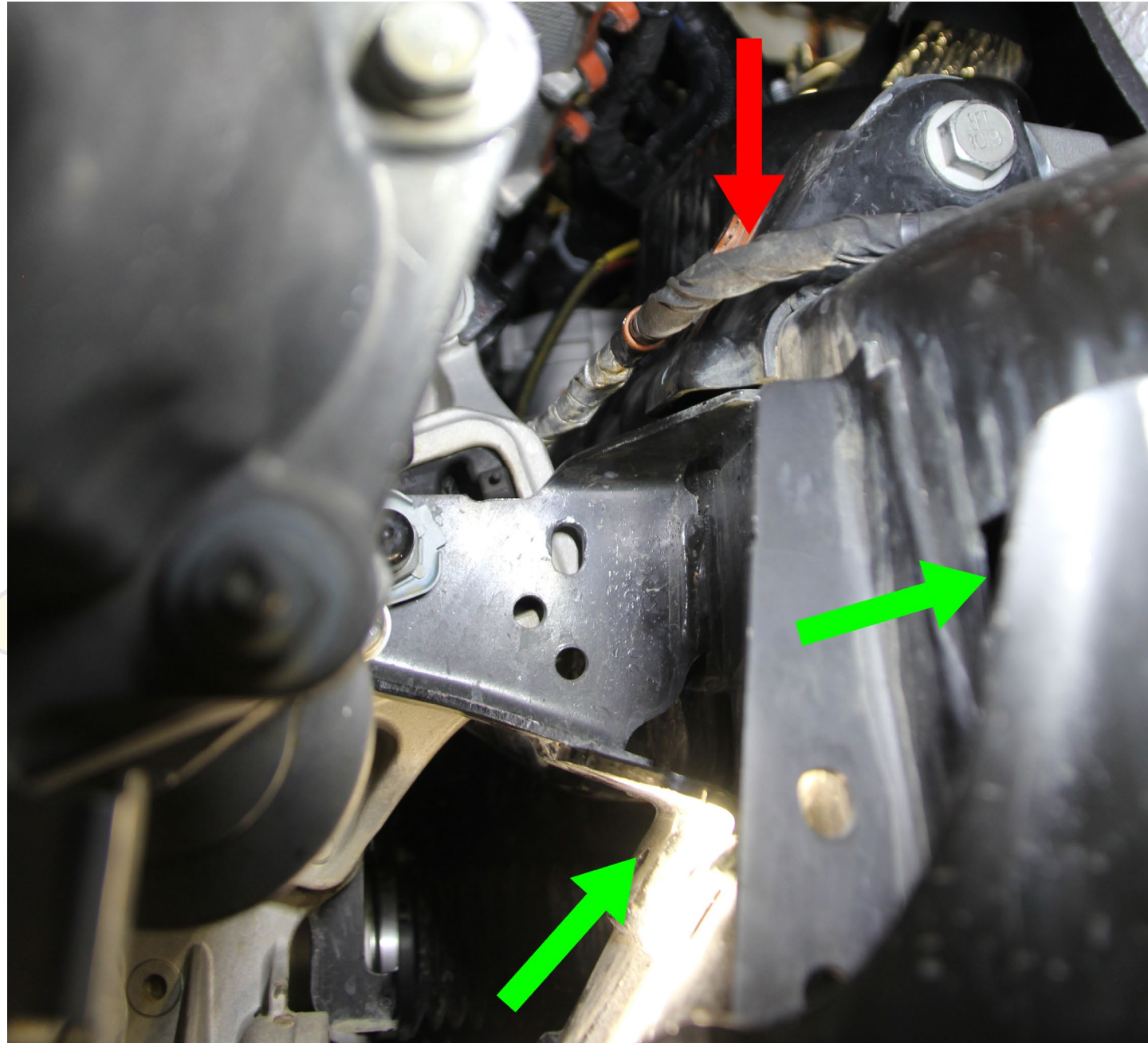


INSTALL: ARH SHIFTER CABLE BRACKET

» Once you have the factory cable bracket removed you will install the ARH Cable Bracket. This is item #10 in your system kit list.

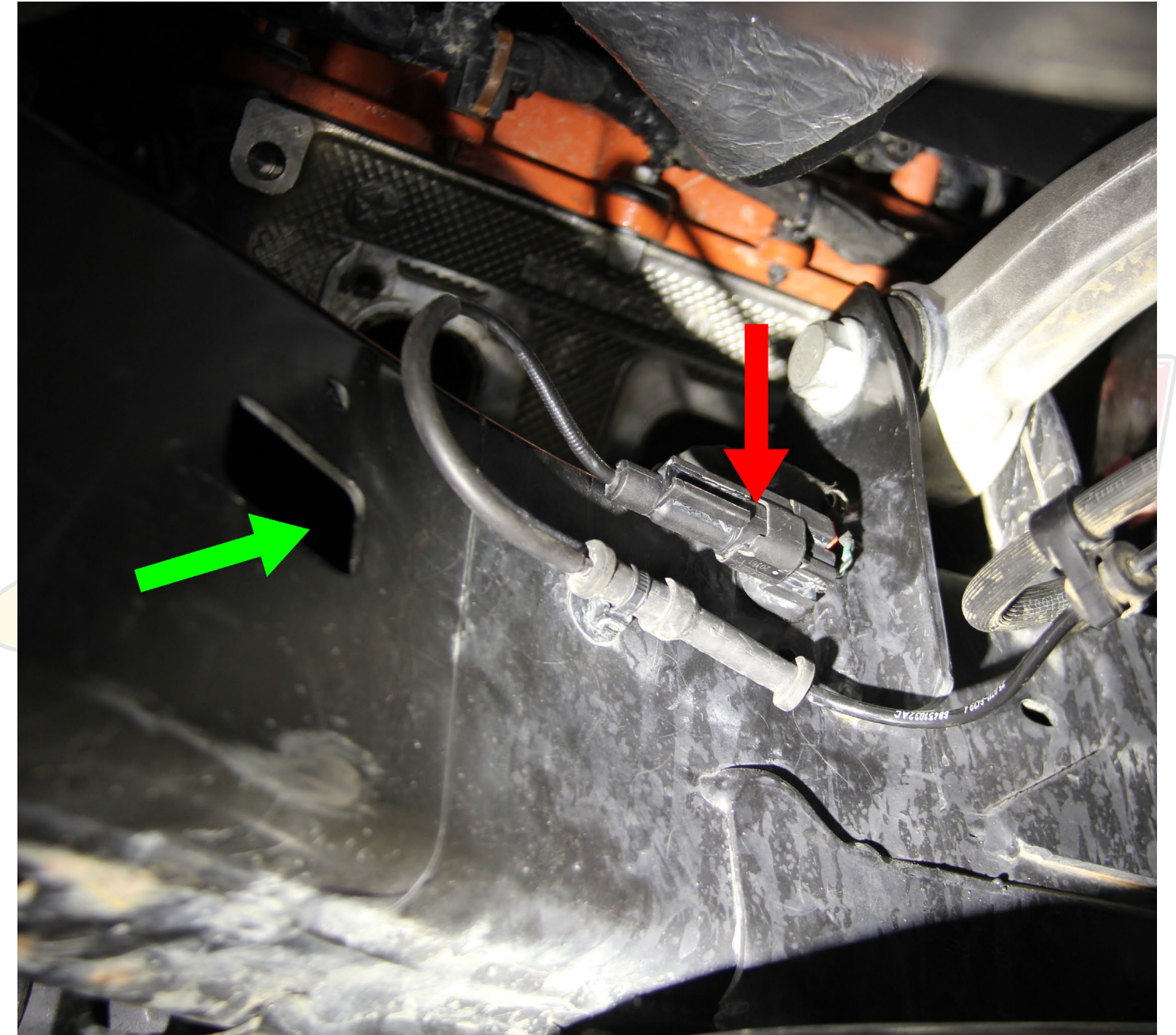


FACTORY REMOVAL GUIDE



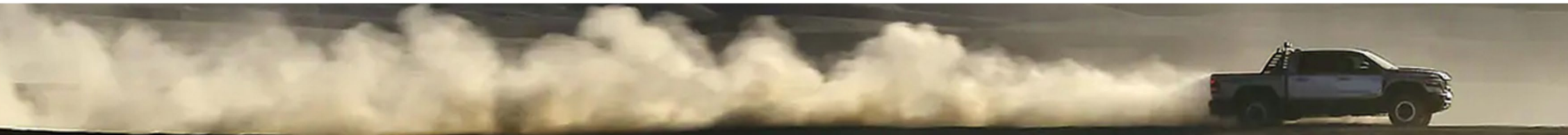
UNPLUG: FACTORY BRAKE WIRING LOOM

» On the passenger's side you will need to unplug the factory brake wiring loom (red arrow) and reroute the loom through the subframe (green arrows).



UNPLUG: FACTORY BRAKE WIRING LOOM CONTINUED

» Disconnect and unclip the factory plug from the subframe (red arrow). Next you will run the wire through the factory subframe (green arrow).



FACTORY INSTALL GUIDE



RECONNECT: FACTORY BRAKE WIRING LOOM

» Electrical loom re-routed view from passenger side wheel well.

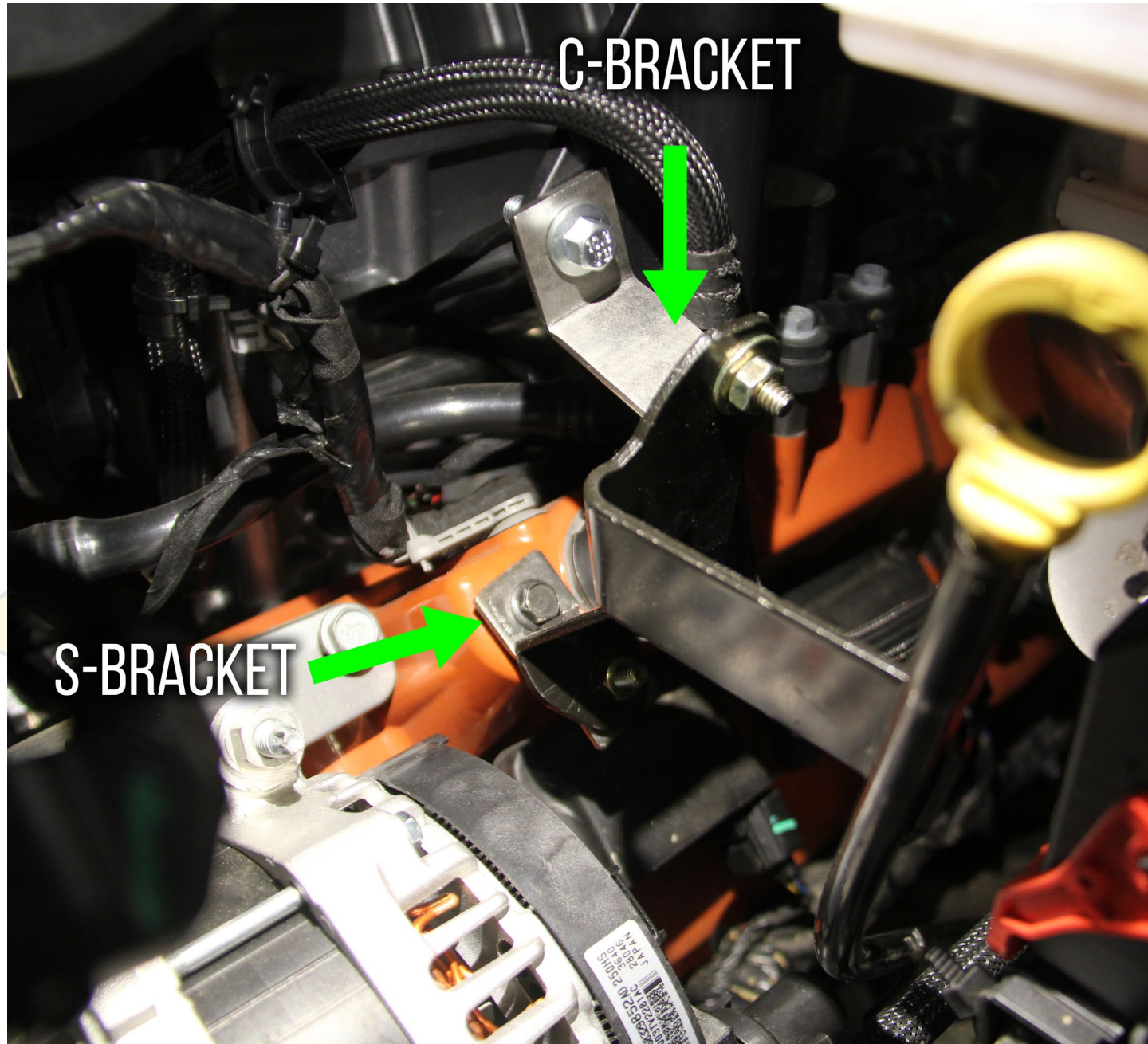


RECONNECT: FACTORY BRAKE WIRING LOOM CONTINUED

» Electrical loom re-routed view from passenger side of the engine.

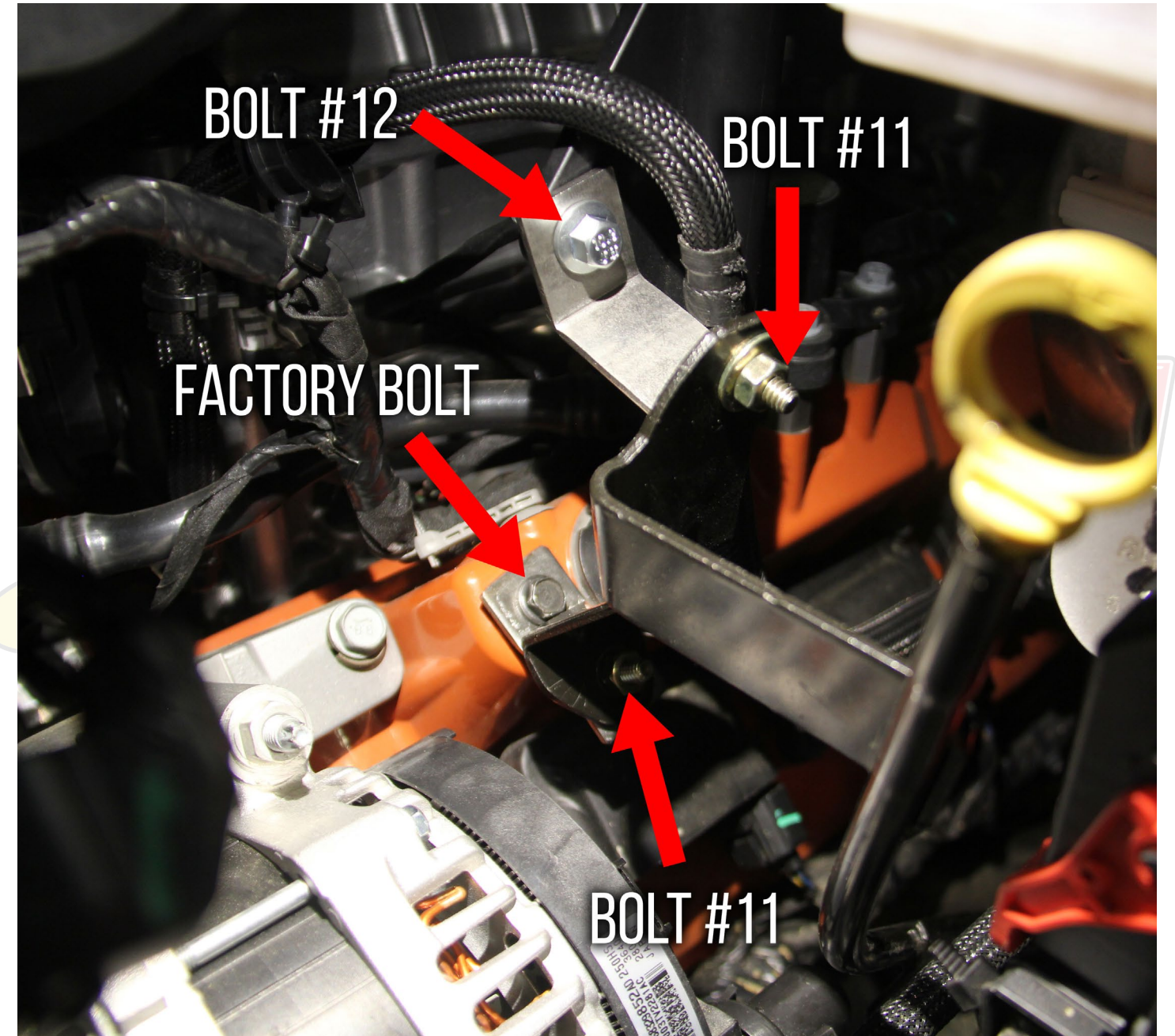


FACTORY INSTALL GUIDE



FACTORY DIPSTICK: BRACKETS

» Unbolt the factory dipstick mounts and install the ARH S&C Brackets from the ARH TRX Kit Box. (Pictured above)

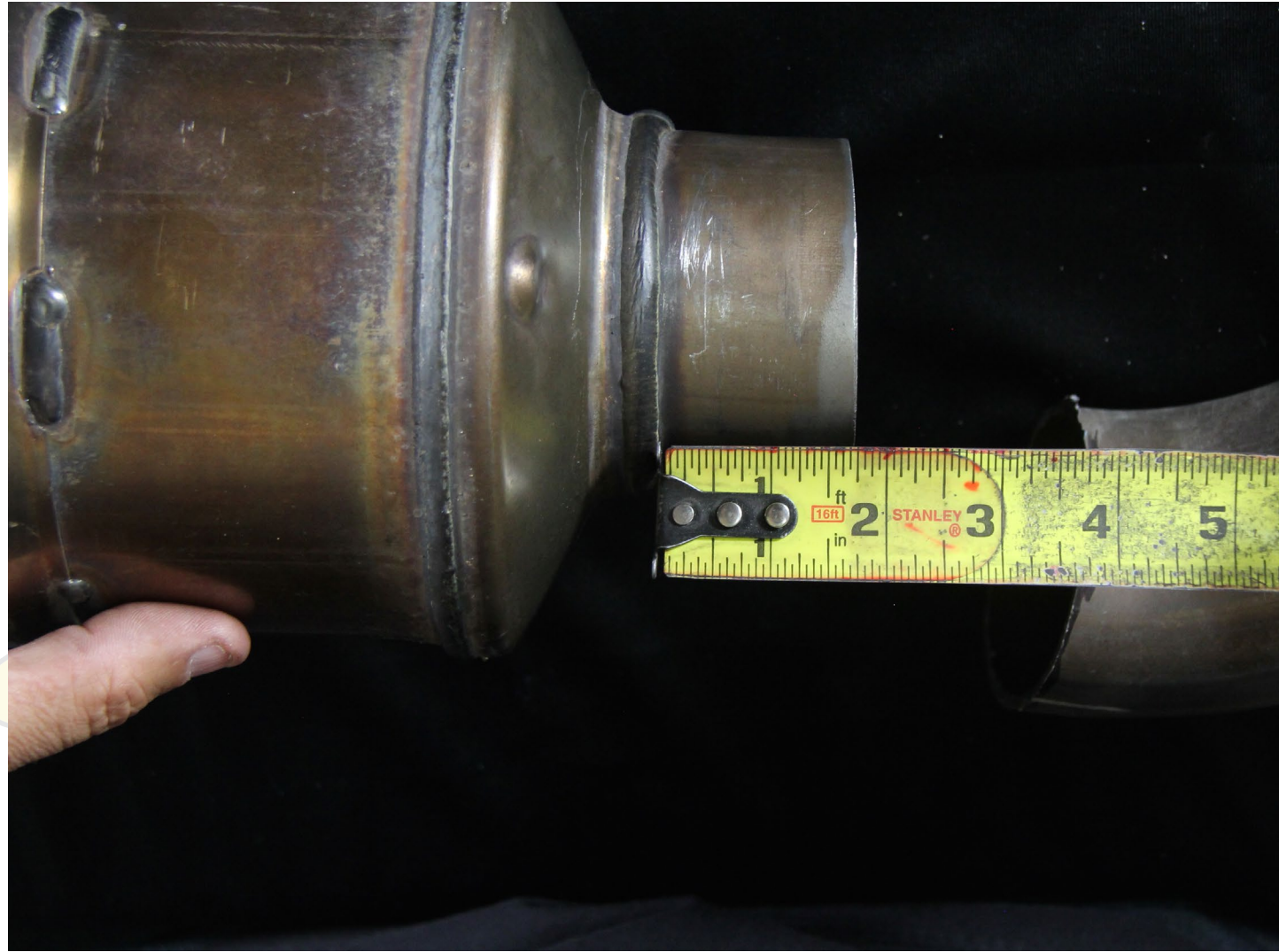


FACTORY DIPSTICK: BOLTS

» When installing the S&C Bracket you will need to use bolts #11 and #12 from your kitbox. We will be reusing one factory bolt during this installation.



ARH INSTALL GUIDE



FACTORY CONNECTION: CUTTING MEASUREMENTS

- » From the factory weld on the catalytic converter you will measure 1-3/4" and make your cut mark. You will do this for both the driver and passenger sides.



ARH CONNECTION: SLIDE & CLAMP

- » Once you have the necessary cuts made, you will connect your driver and passenger side connection pipes to the factory catalytic converters. Now that you have confirmed your test fits, it's time to reinstall this section of the exhaust system.