

Holley® *EFI*

ELECTRONIC FUEL INJECTION

Pro Dash PC Log Viewer



CONTENTS:

Introduction.....	3
File Formats	3
Data Log Recording & Playback.....	3
PC Log Viewer	3
Selecting files.....	4
Log Properties.....	5
Navigation	5
Scrolling through the data.....	6
Viewing Data Values	6
Setting Zero point	6
Other Info	6
Trimming Log Files	6
Comparing log files.....	6
Collections.....	8
Channel Customization	8
Other functions	9

ATTENTION!

THE USB FLASH DRIVE INCLUDED WITH YOUR PRO DASH CONTAINS A DETAILED USER MANUAL. ONE MAY ALSO BE FOUND ONLINE AT www.holley.com.

Introduction

This manual covers the log review software that is used when reviewing “HDL” data log files when recording via a Holley EFI Pro Dash. “HDL” is the file format used when recording in the standalone mode on a Holley Pro Dash.

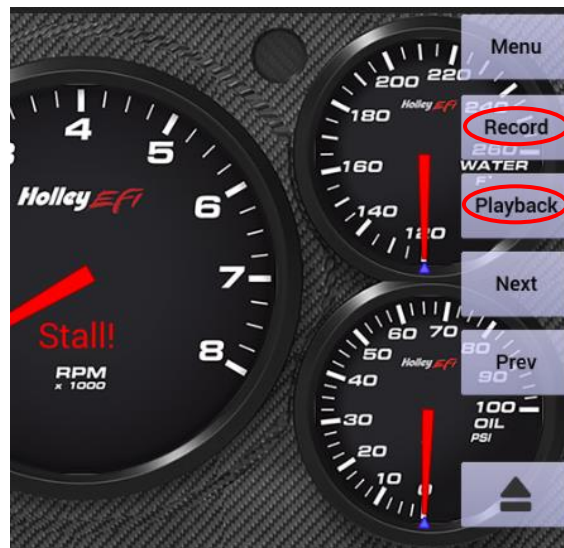
File Formats

When data logging directly by the Pro Dash, logs can be recorded in two file formats. When recording in the standalone dash mode, logs will always be recorded with a .hdl file format/extension. The log can only be reviewed by the log reviewer covered by this manual. When the dash is logging a Holley EFI HP or Dominator ECU, logs can be recorded in the standard Holley EFI format (.dlz file extension), which can then be reviewed with the standard Holley EFI log reviewer software. As an option, the .hdl format can be chosen in the dash setup. If this is the case, these logs can only be reviewed with the software covered here, and not with the normal Holley EFI software.

Data Log Recording & Playback

Data logs can be recorded by the dash by selecting the “Record” button or configuring on a dash input to start recording when the input is activated. Logs will be saved to a USB stick (if present) or to internal dash memory (if no USB stick is present).

The Holley EFI Pro Dash will play back logs that have been locally recorded using the ‘Record’ button or retrieved from an HP or Dominator ECU. Pressing the ‘Playback’ button on the right side of the dashboard screen allows you to play back these logs from the dash’s internal storage or a USB flash drive.



PC Log Viewer

The data log files can be transferred to a PC for viewing with the Holley Datalog Viewer (available for download in the Digital Dash section at https://www.holley.com/support/resources/#Fuel_Injection.)

It is recommended that you first copy the log files to a folder on your computer before opening.

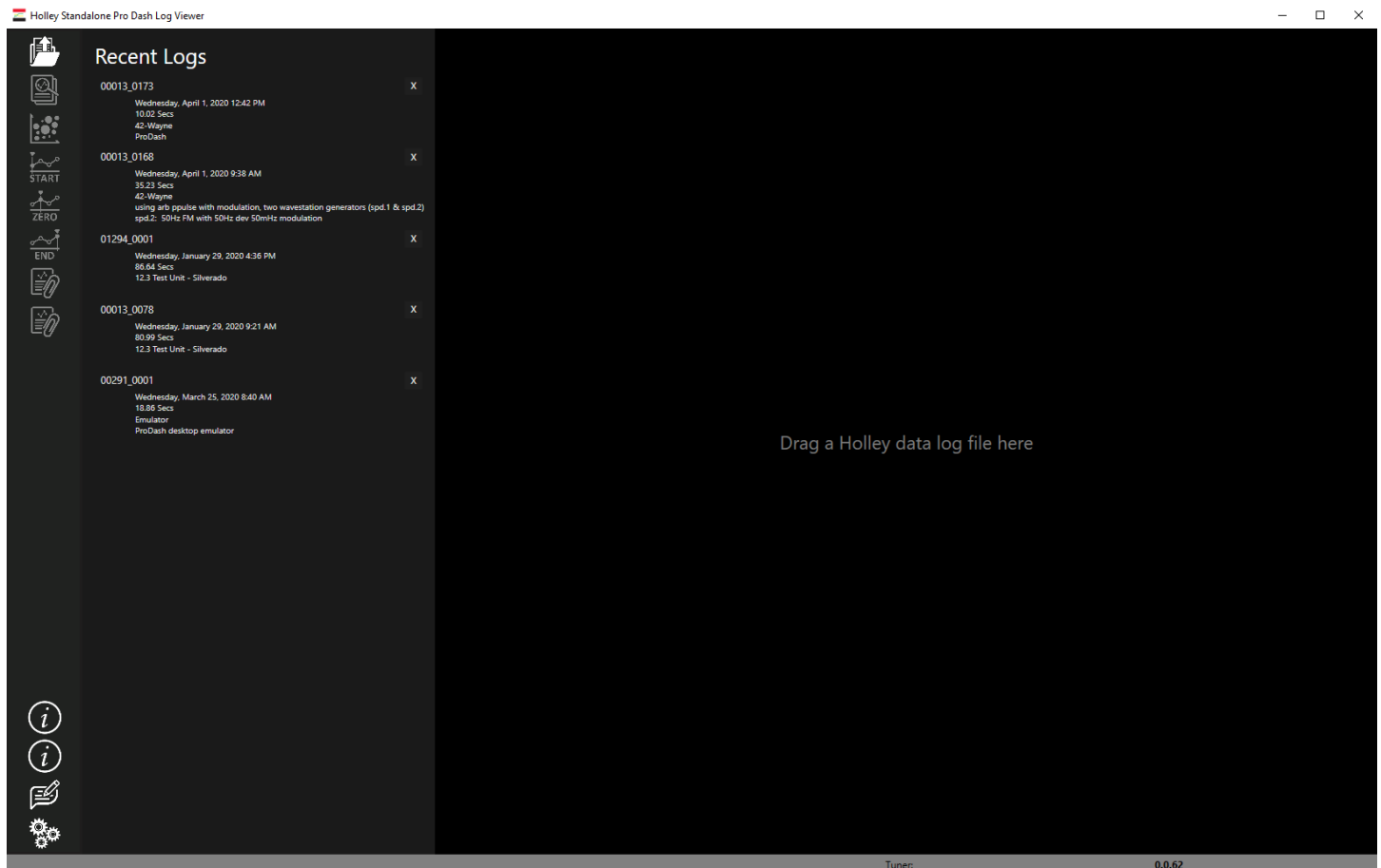
Basic Feature Overview

- Open and separately view up to five different log files (shown as tabs at the top of the screen)
- Compare up to five log files (Compare opens an additional tab)
- Create an unlimited number of customized “Collections” of different groupings of channel data unique to each application/vehicle.
- Graph lines can be individually customized for color, thickness and line type.
- Channel smoothing is available
- Y axis scaling can be auto-scaled or limits user defined
- Scatter plot graph is available

Selecting files

You can double-click on a log file in explorer, or start the application and then use the file open icon to open the file.

The recent logs screen can be used to find previously viewed data logs based on their time, chassis and notes fields.

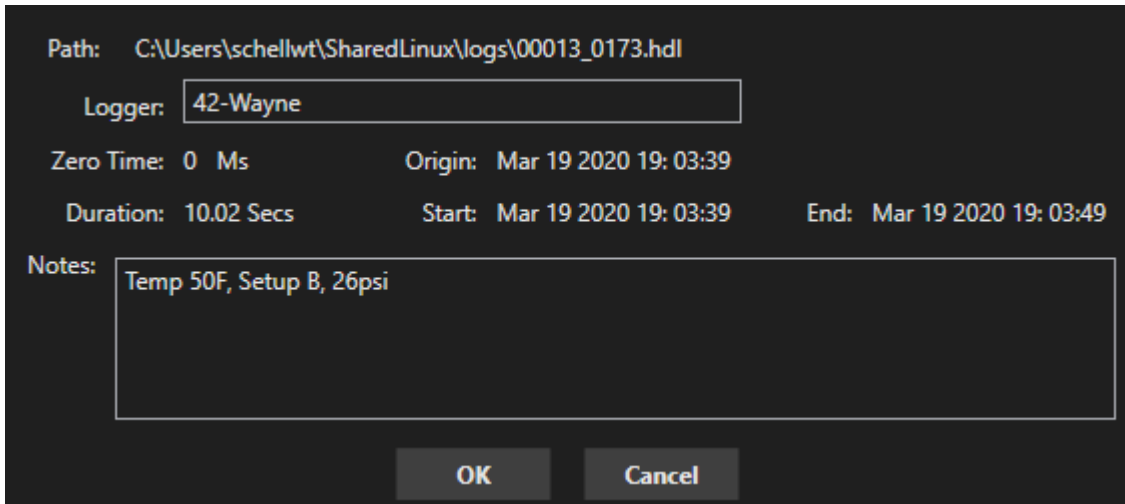


Log Properties

By default, a pro dash alphanumeric number are displayed in the logger field. It is recommended to change this to unique identification of the vehicle, for example “42 – Wayne”. Future files that are recorded by this pro dash will show this name.



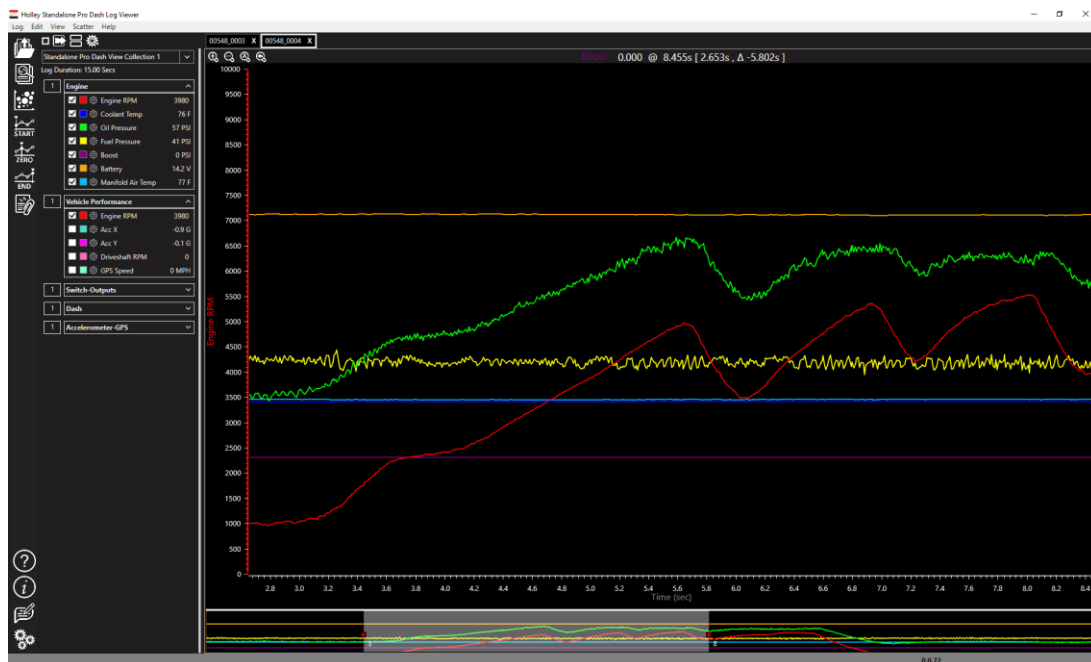
In the notes field, you can enter notes about the vehicle setup and other run information like the weather and track conditions. This information can be used to easily find runs to compare.



Navigation

You can zoom in by clicking the left button in the graph and selecting an area (drag mouse holding the left button).

The icons at the top of the screen can be used to zoom in, zoom out, zoom all data or zoom previous.



Scrolling through the data

At the bottom it shows the complete log file, with a greyed portion which is the on-screen zoomed area. You may put your mouse pointer inside this area, hold the left button and drag the zoomed area left and right. The scroll button on a mouse also zooms in and out.

Viewing Data Values

When you click in the graph area, the values at the current cursor location are shown on the left. You can use the left/right arrow keys to move the current point.

Setting Zero point

For drag racing, it is helpful to mark the zero point (launch) of the run. Move the cursor to the launch, then press the Zero Icon.



Other Info

Clicking the left mouse button on the channel name brings up its axis values on the left of the graph, right click on the right.

If a channel axis is shown, you can hold the left mouse button, and “grab” the axis to move the channel data up or down. This is helpful when channels overlap.

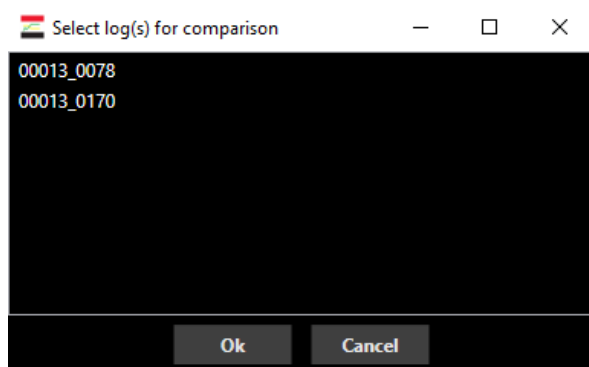
Trimming Log Files

If there is unnecessary data at the beginning or end of the log file, you can move the cursor and set a new start and end of the log file using the Start and End Icons. Warning: You are not able to undo this function. A warning message will appear.



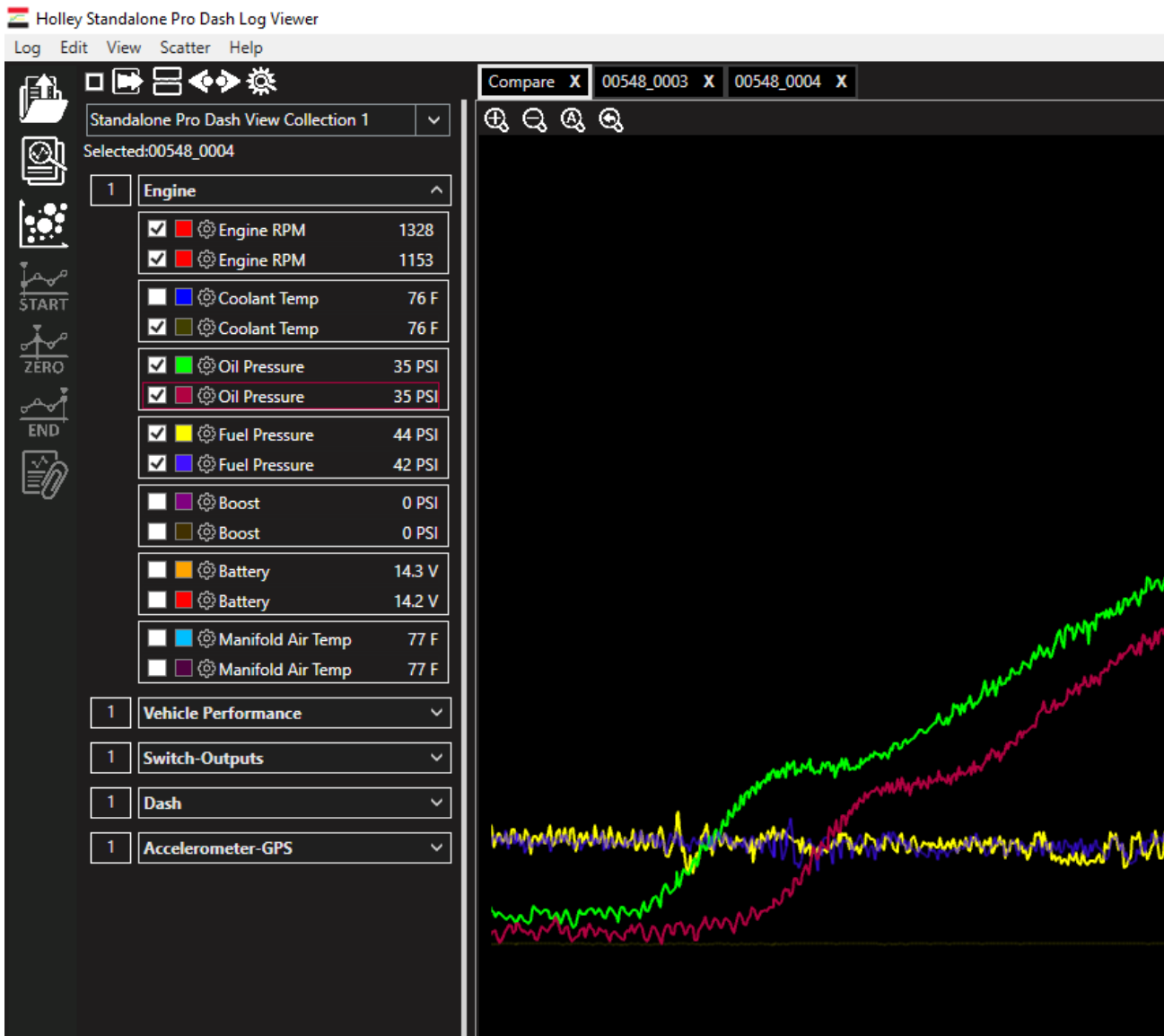
Comparing log files

Once you have more than one log file open, the comparison icon is enabled. Select the comparison icon and the open files will be shown.



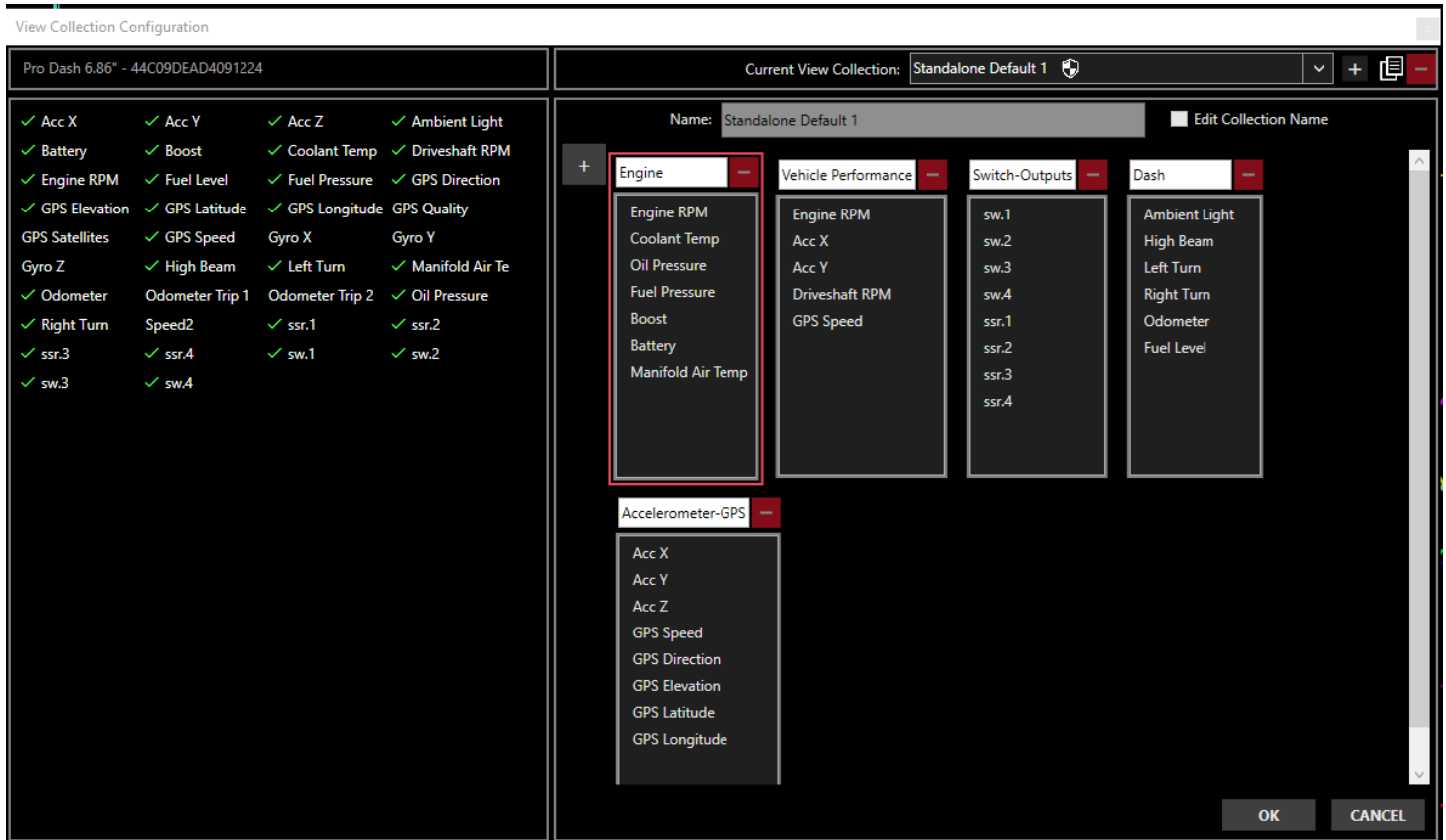
Click to highlight each log file (up to 4 in addition to the base log file) that you want to compare and click OK.

A new compare window is opened and you can see the data for each trace beside each other.



Collections

Different car setups always have different sensors and users like to configure the order and structure they see the sensors in the logs differently. To account for this, the log viewer software allows the user to set up as many “Collections” as they want. A Collection allows the users to take all the sensors for a specific application and configure those sensors in an order they want. To set up a collection download a log file from the specific car, this will load all the sensors into the software. Click on the gear icon on the top left of the screen. This brings up the screen below.



A collection is made up of “Views” (“Engine”, “Vehicle Performance”, etc..) above. You can have just one view or as many as you want. They can be individually named. There are two Default Collections already set up (Standalone Default 1 and 2). These are read only can can’t be changed, but you can duplicate and edit these. The “-” icon on each view allows it to be deleted. The collection name can be changed by checking the “Edit Collection Name” checkbox. To add channels to a view hold the left mouse button down on them on the left of the screen and drag it to the desired view.

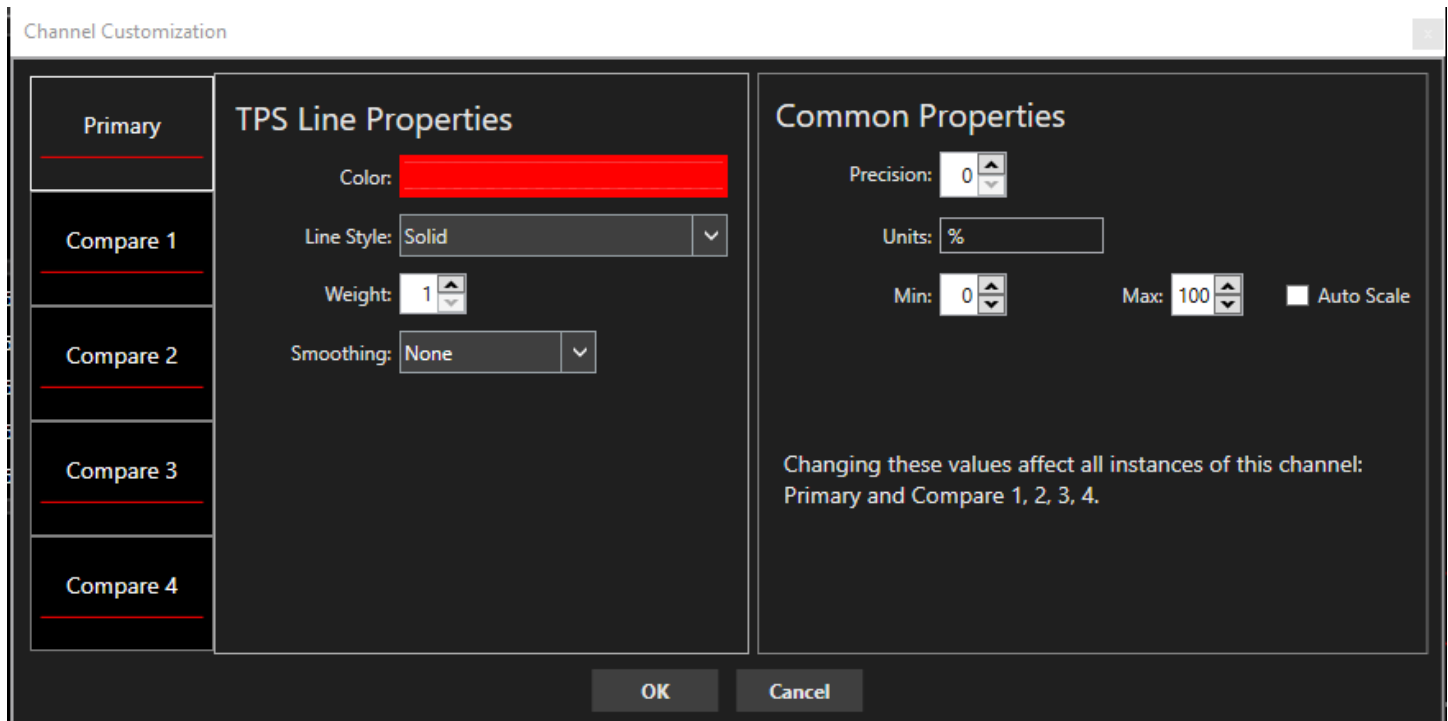


The red X icon deletes a collection. The “+” creates a new collection from scratch. The icon in the middle of these creates a new collection, which starts as a duplicate of the currently opened collection.

Channel Customization

Each channel can be customized for a given Collection. To modify this, select the “gear” next to the channel name. In addition to that, the four compare files can also be uniquely customized. For example you could have Engine RPM be a different color or line type for the base and four compare files. The picture below

shows the Channel Customization options. The “Common Properties” will apply to both the primary and all 4 compare files. However, it is unique per each Collection. The “Line Properties” are independent between the primary and compare logs and can be set separately.



Other functions

Settings

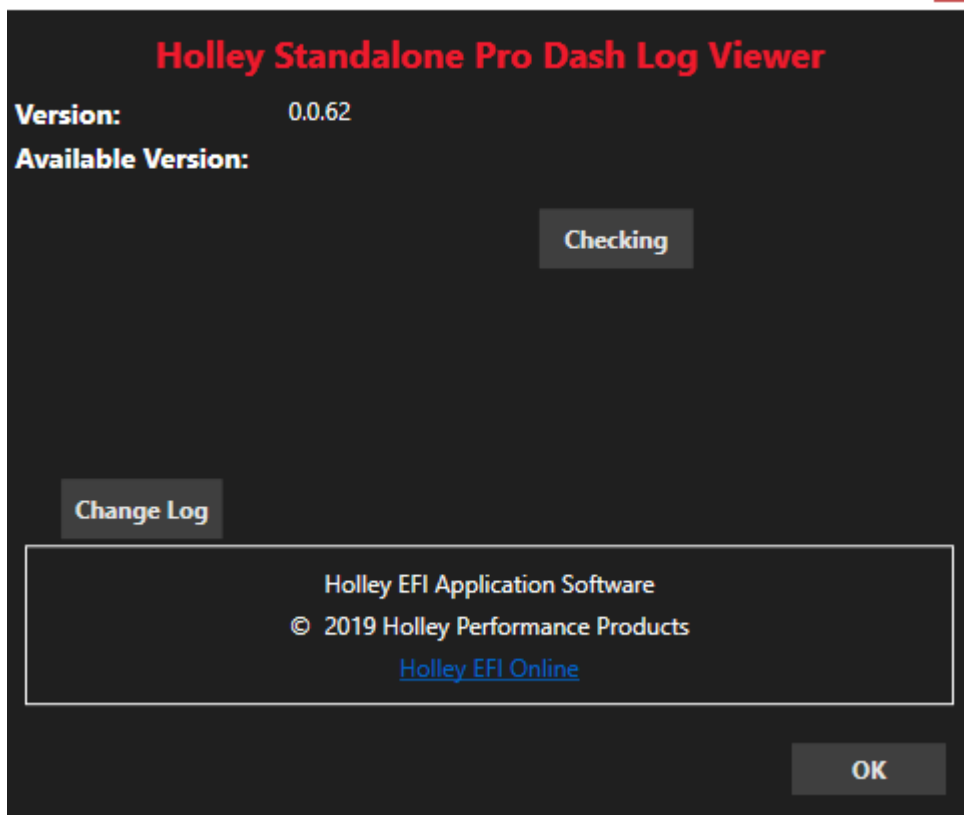
Settings such as a light/dark theme for the graph, automatic update checking and other options can be found using this icon.



About/Information



This icon shows the current version. When you PC is connected to the internet it will automatically check for updates. It will indicate when a new version is available and the user can choose to download it.



199R12076
Date: 7-2-20

Holley Technical Support
1-866-464-6553